

2-way Ball Valve



**Manual Clamped
2-way Ball Valve**



**Pneumatic (Stainless Steel Actuator)
Clamped Direct Way Ball Valve**

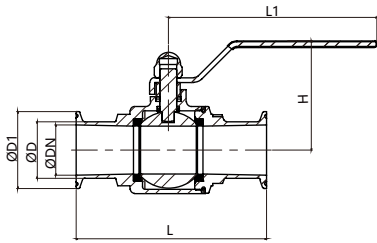
Applications:

Sanitary direct way ball valve adopts standard electronic polishing, smooth surface to ensure cleanliness, no media accumulation area, no potential pollution. The valve can be assembled and disassembled quickly, so it is easy to open and maintain the valve, which can shorten the shutdown time of the process. It is widely used in food, pharmaceutical, cosmetics, clean steam, beer, beverage, biochemical industrial process control occasions.

Design Features:

- Small fluid resistance
- Simple structure, small volume, light weight and easy maintenance
- Easy to operate, open and close rapidly, only need to rotate 90° from full open to full close.
- When the valve is fully opened or fully closed, the ball and the sealing surface of the valve seat are isolated from the medium and the medium will not cause corrosion to the valve sealing surface when the medium passes.
- Size: 1/2"-4". $\Phi 12.7$ — $\Phi 101.6$
- Connection : Clamp, Weld, Thread, Flange ect.
- Driving mode: Manual , Pneumatic, Electric
- Standard: ISO、DIN、IDF、SMS、3A etc.
- Quality: The inside and outside of the product are treated with high-end polishing equipment to meet the surface precision requirements
- Working Pressure: 0-10Bar
- Working temperature: -40°C ~ +150°C

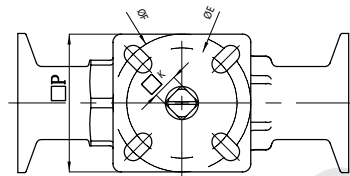
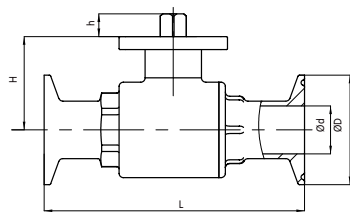




JOV-BHM2001-22

2-way Ball Valve Clamp End

Size	ØDn	ØD	ØD1	L	L1	H
1/2"	9.4	12.7	25.2	75	111	60
3/4"	15.8	19.1	25.2	100	114	62
1"	22.1	25.4	50.5	120	140	65
1.25"	28.5	31.8	50.5	130	140	72
1.5"	34.8	38.1	50.5	140	160	79
2"	47.5	50.8	64	164	175	94
2.5"	60.2	63.5	77.5	189	230	104
3"	72.9	76.2	91	212	246	116
4"	97.4	101.6	119	260	333	151



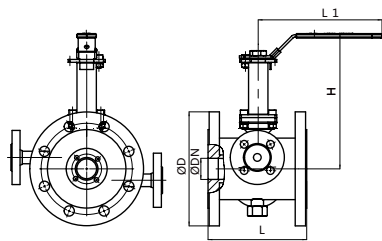
JOV-BH2001-11

2-way Ball Valve Clamp End with ISO Mounting Pad

Size	Ød	ØD	ØE	ØF	L	H	h	□ K	□ P	N.M
3/4"	15.8	50.5	40	50	100	34	9	9	50×50	6
1"	22.1	50.5	40	50	120	43	10.5	9	50×50	9
1.25"	28.5	50.5	40	50	130	47	10	9	50×50	14
1.5"	34.8	50.5	40	50	140	53	10	9	50×50	22
1.75"	42	64	40	50	158	60	12	11	50×50	55
2"	47.5	64	40	50	163	64	12	11	50×50	55
2.5"	60.2	77.5	50	70	190	75	16.5	14	64×64	60
3"	72.9	91	50	70	211	88.5	18	14	64×64	105
3.5"	85	106	70	102	232	100	18	17	90×90	130
4"	97.4	119	70	102	260	125	18.5	17	90×90	165

Jacketed Ball Valve Flange End With ISO Mounting Pad

Size	ØDn	ØD	L	L1	H
DN20	19	150	130	130	178
DN25	25	165	140	170	207
DN40	40	200	173	217	237
DN50	50	200	203	217	247
DN80	80	250	240	326	282
DN100	98	285	267	326	300



JOV-BMHHPJAC-44