

J&O®

J&O FLUID CONTROL CO., LIMITED

Sight Glass

J&O®

J&O FLUID CONTROL CO., LIMITED

Address: Binhai ETDZ, 5 Road, Longwan, Wenzhou, China. 325000

Tel: +86 577 8663 2750

Fax: +86 577 8663 2850

Mob./WhatsApp: +86 186 5778 5727

Site: www.sanitary-valves.com

Email: Info@jo-pv.com

With more than 15 years of market experiences, we have become the leading supplier service for pharmaceutical, chemical, food, Beverage and Lithium battery companies



Site Code



WhatsApp Code

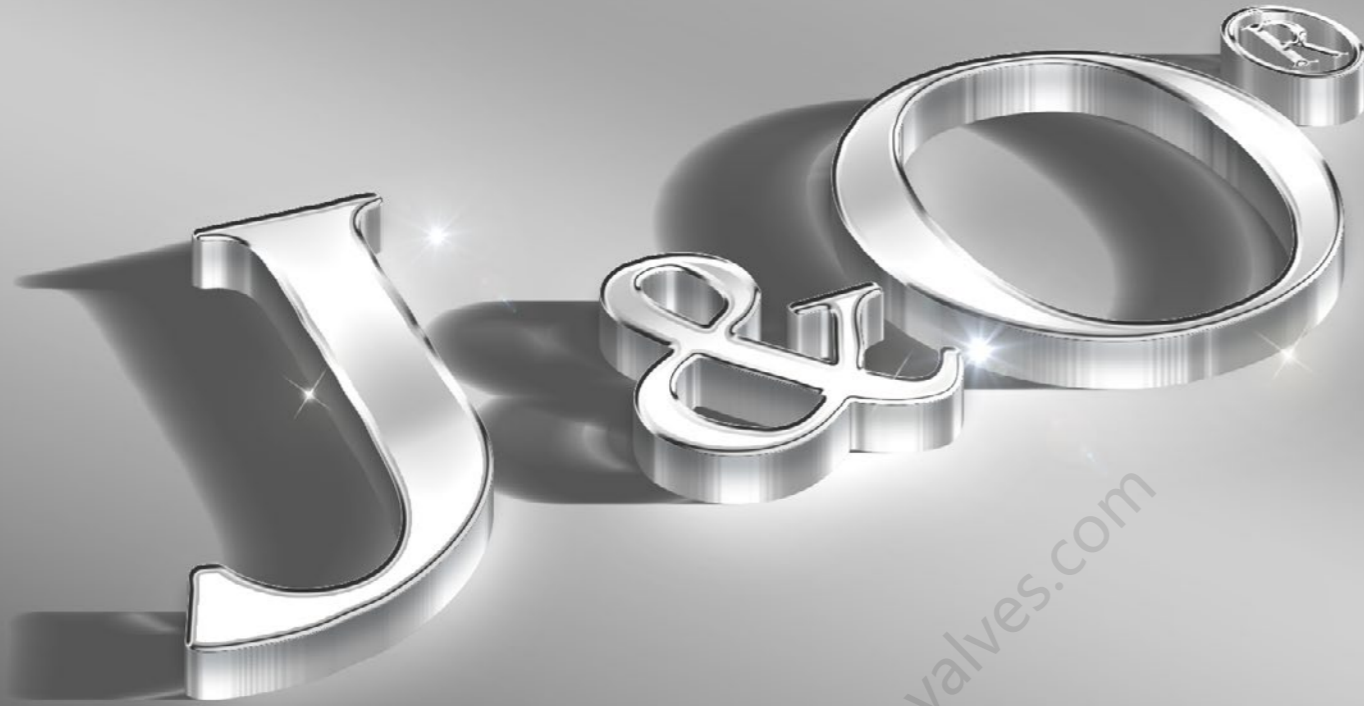
J&O BRAND, RELIABLE QUALITY FOR YOU

CE&ISO 9001:2015 CERTIFIED ACQUIRED

15 YEARS FLUID SOLUTION EXPERIENCES

EXPORTING TO OVER 40 COUNTRIES

EXCELLENT VALUE-ADDED SERVICE.



We focus on Details
We Make Different
J&O Brand,that can be trust.

J&O PROFILE

J&O Fluid Control Co., Limited established in 2008, a leading Manufacturer and Supplier of high quality hygienic stainless steel flow control equipments.

J&O services the Food, Dairy, Beverage, Cosmetic, Pharmaceutical, Biological engineering, Lithium battery, Semiconductor, Water treatment, Petroleum and Chemical industries.

J&O product series consists of sanitary stainless steel Valves & Fittings:

- >>Sanitary Stainless Steel Pumps
- >>Sanitary Stainless Steel Valves
- >>Stainless Steel Tank Accessories
- >>Stainless Steel Pipe Fittings
- >>Stainless Steel Flanges
- >>Stainless Steel Double Ferrule Tube Fittings
- >>Hydraulic Pneumatic Quick Coupling
- >>Carbon Steel Pipe Fittings
- >>Customized Valve and Fittings

Through the years, "Perfection" has been the only goal we pursue. In order to satisfy customers, with continuous efforts, we are working towards perfection through a Quality Assurance System. With persistence and effort, we have become one of the leading enterprises of sanitary valves and pipe fittings in China.

Our organization is dedicated to provide our customers with best service of every aspect. We strongly believe, that the friendship and trust given by our customers, is the great treasure we have.

J&O[®]
J&O FLUID CONTROL CO., LIMITED

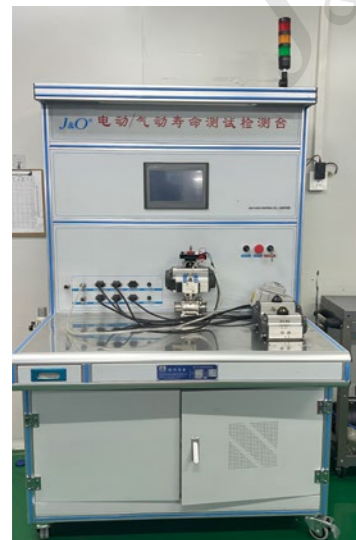
Certificate



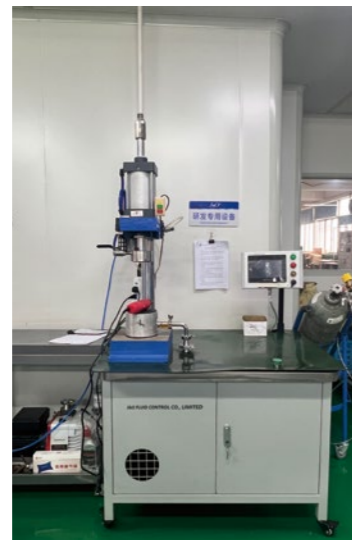
Plant & Producing



Testing Machine



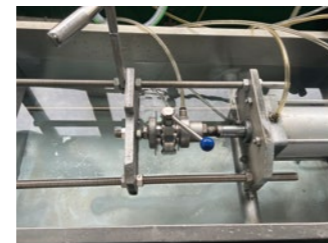
Actuator Testing



Helium Leak Detector



Pressure Test for Large Valve



Pressure Test for Small Valve

Sanitary Sight Glass



Application

For a more visual and convenient observation of the running status of the equipments and pipeline systems, sight glasses are widely used in fields such as brewing, beverages, pharmaceuticals, and dairy.

Standard Design

J&O can provide straight sight glasses, sight glasses with lamp, and cross type sight glasses. The straight sight glass can be installed horizontally or vertically, and can be observed at 360°, making it particularly suitable for timely observation of pipelines. The sight glass with lamp is a union type sight glass. It can work under dim light and is easy to disassemble. So it is suitable for observation of tank equipment.

Technical Data

Working temperature: -20~+135°C (when the sealing is EPDM.)

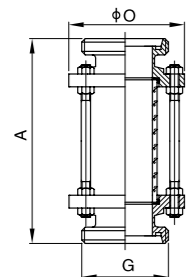
Material

- Steel parts: 304 or 316L
- Glass Material: borosilicate glass (straight sight glass)
borosilicate glass or tempered glass (union type sight glass)
- Gasket: EPDM (standard); NBR, PTFE (optional)

Sight Glass

Our Core Values: Team, Details, Altruism, Innovation and Embrace Change.

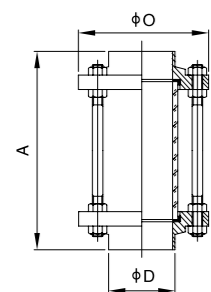
DIN



JOF-SGH01-33-D

Thread Sight Glass

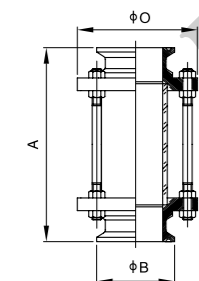
Size	A	G	O
DN25	154.0	RD52×1/6	78.0
DN32	156.0	RD58×1/6	82.0
DN40	156.0	RD65×1/6	88.0
DN50	166.0	RD78×1/6	110.0
DN65	176.0	RD95×1/6	127.0
DN80	184.0	RD110×1/4	140.0
DN100	200.0	RD130×1/4	160.0



JOF-SGH01-11-D

Weld Sight Glass

Size	A	D	O
DN25	140.0	28.0	78.0
DN32	140.0	34.0	80.0
DN40	140.0	40.0	80.0
DN50	142.0	52.0	100.0
DN65	144.0	70.0	127.0
DN80	148.0	85.0	140.0
DN100	152.0	104.0	160.0

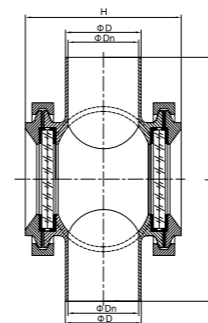


JOF-SGH01-22-D

Tri-Clamp Sight Glass

Size	A	B	O
DN25	156.0	50.5	78.0
DN32	156.0	50.5	80.0
DN40	160.0	50.5	80.0
DN50	166.0	64.0	100.0
DN65	168.0	91.0	127.0
DN80	172.0	106.0	140.0
DN100	194.0	119.0	160.0

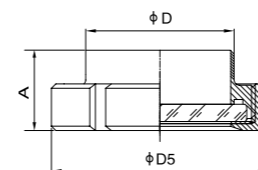
DIN



JOF-SGHC01-11-D

Cross Sight Glass Spherical Type

Size	D	Dn	H	L
DN25	28	25	67	90
DN32	34	31	78	100
DN40	40	37	83	130
DN50	52	49	99	165
DN65	70	66	125	205
DN80	85	81	145	250
DN100	104	100	168	300

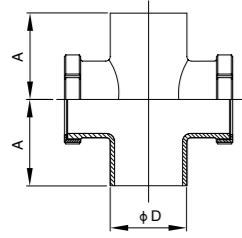


JOF-SGHU01-D

Union-Type Sight Glass

Size	DIN11851			DIN11850	
	A	D	D5	A	D
DN25	35.0	31.0	62.0	28.0	28.0
DN32	38.0	37.0	68.0	28.0	34.0
DN40	40.0	43.0	78.0	28.0	40.0
DN50	42.0	55.0	92.0	28.0	52.0
DN65	47.0	72.0	110.0	30.0	70.0
DN80	52.0	87.0	126.0	33.0	85.0
DN100	62.0	106.0	146.0	38.0	104.0
DN125	52.0	132.0	178.0	40.0	129.0
DN150	66.0	157.0	208.0	42.0	154.0

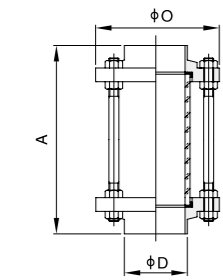
3A/SMS/ISO/IDF



JOF-SGHC02-11

Cross Sight Glass

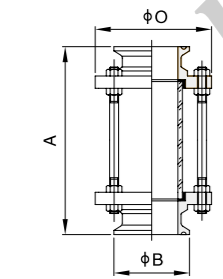
Size	A	D
1"	25	33.5
1 1/4"	32	38.0
1 1/2"	38	48.5
2"	51	60.5
2 1/2"	63	83.5
3"	76	88.5
4"	102	127.0



JOF-SGH01-11

Weld Sight Glass

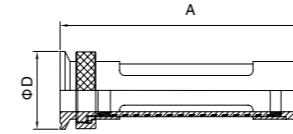
Size	A	D	O
1"	25	140.0	25.4
1 1/4"	32	140.0	31.8
1 1/2"	38	140.0	38.1
2"	51	140.0	50.8
2 1/2"	63	144.0	63.5
3"	76	144.0	76.2
3 1/2"	89	148.0	89.0
4"	102	152.0	101.6



JOF-SGH01-22

Tri-Clamp Sight Glass

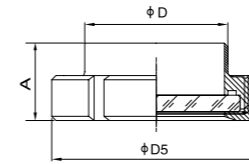
Size	A	B	O
1"	25	156.0	50.5
1 1/4"	32	156.0	50.5
1 1/2"	38	160.0	50.5
2"	51	166.0	64.0
2 1/2"	63	168.0	77.5
3"	76	172.0	91.0
3 1/2"	89	178.0	106.0
4"	102	194.0	119.0



JOF-SGH04-22

Tri-Clamp Sight Glass with Stainless Steel Net

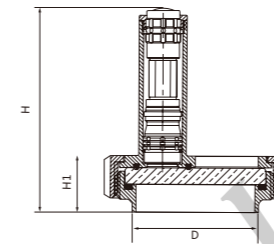
Size	A	D
25	155.0	50.5
32	155.0	50.5
38	155.0	50.5
51	155.0	64.0



JOF-SGHU01

Union-Type Sight Glass

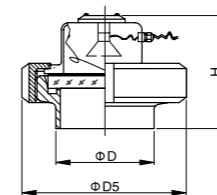
Size	A	D	D5
25	25.0	25.4	50.0
32	25.0	31.8	60.0
38	28.0	38.1	72.0
51	28.0	50.8	82.0
63	32.0	63.5	98.0
76	33.0	76.2	114.0
89	34.0	88.9	125.0
102	36.0	101.6	150.0



JOF-SGHU03

Union Type Sight Glass with Light

Size	D	H	H1
DN65	70	121.5	31
DN80	85	123.5	33
DN100	104	126.5	37
DN125	129	127.5	38
DN150	154	133.5	45

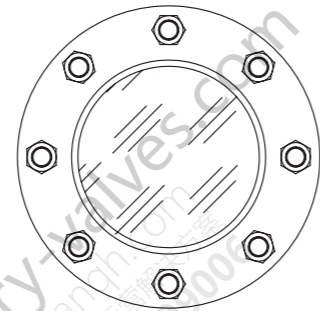
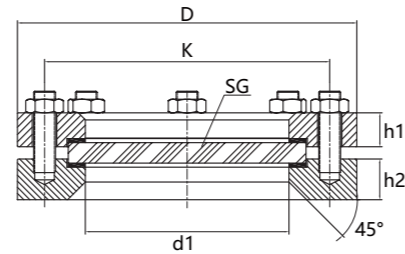


JOF-SGHU05

Union Type Sight Glass with Cable Light

Size	H	D	D5
DN80	90.0	87.0	126.0
DN100	100.0	106.0	146.0
DN125	90.0	132.0	178.0
DN150	96.0	157.0	208.0

Flange Sight Glass



JO-FLSG

Standard Size

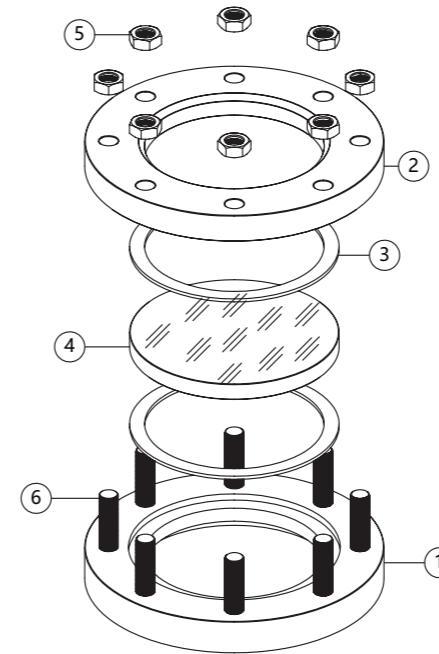
At temperature 50°C /122 °F

Code	d1	SG	D	h1	h2	K	P.P
	mm	mm	mm	mm	mm	mm	bar
Φ 050	80	100	165	16	30	125	10 / 16
Φ 080	100	125	200	20	30	160	10 / 16
Φ 100	125	150	220	22	30	180	10 / 16
Φ 125	150	175	250	25	30	210	10 / 16
Φ 150	175	200	285	30	36	240	10
Φ 200	225	250	340	35	36	295	10

If you want to check for more details please check the following drawing

*1bar ≈ 14.5psi ≈ 0.1mpa

Specification



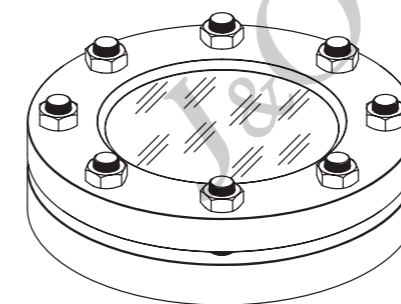
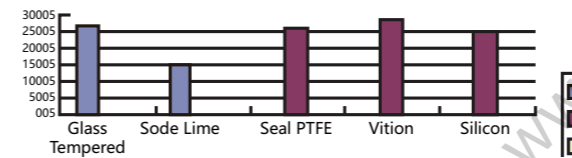
Item	Description	Material	Qty
1	Welding Flange	1.4301/1.4404	1
2	Cover Flange	1.4301/1.4404	1
3	Gasket	PTFE	2
4	Sight Glass Disc	Tempered	1
5	Nut	T304	8
6	Screw	T304	8

Application

weld-on sight glass fittings for the observation of the internals of pressure vessels, silos, gear-trains, separators, pipelines, etc.

Operating Conditions

These fittings are available for pressure up to 16 bar (depending on size, higher pressure rating on request). For temperature rating (depending on material selection) see the following diagram.



Assembly

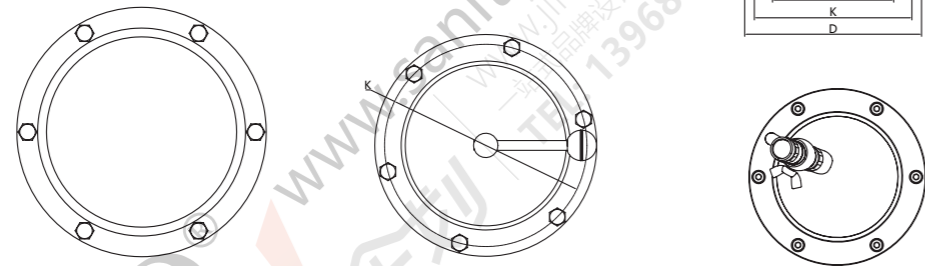
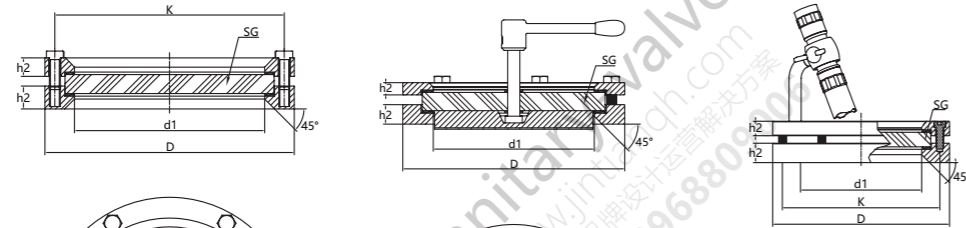
After welding base flange (1) onto or into vessel wall, seals (3), Glass disc (4) and cover flange (5) are placed together in the order shown. Then the nuts (5) (in case of studded base flange) and washers are progressively tightened, always working on diametrically opposed pairs of nuts at time. Other information can be taken from DIN28120.

Ordering Information

Please specify the selected items as follows:

Fittings: nominal bore (DN) and nominal pressure(PN).
Material: welding flange, bolts, cover flange, glass disc, seals.

Flange Sight Glass



JO-FLSG02

JO-FLSG02-WP

JO-FLSG02-LAP

Standard Size

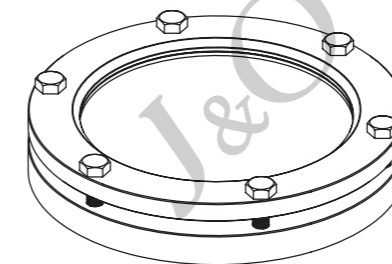
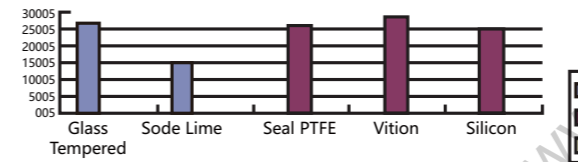
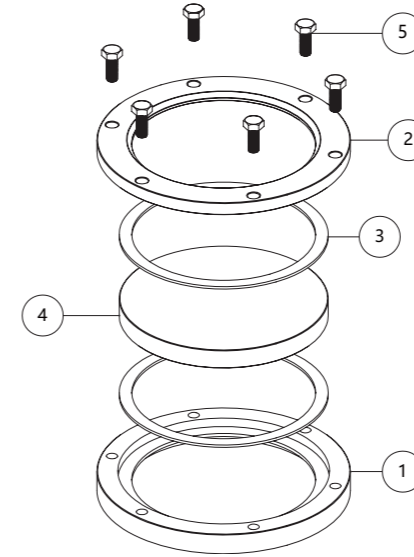
At temperature 50°C /122 °F

Code	d1	SG	D	h1	h2	K	Tem.MAX	Pressure Rating (bar)
	mm	mm	mm	mm	mm	mm		PN
Φ 080	80	95×10	126	10	16	110	130	6
Φ 100	100	115×12	146	10	16	130	130	6
Φ 130	130	150×15	182	10	16	166	130	6
Φ 150	150	164×12	196	10	16	180	130	6

If you want to check for more details please check the following drawing

*1bar ≈ 14.5psi ≈ 0.1mpa

Specification



Part No.	Gasket	
	Material	Color
Φ 031	PTFE	White
Φ 032	EPDM	Black
Φ 033	FPM	Black

Item	Description	Material	Qty
1	Welding Flange	1.4301 / 1.4404	1
2	Cover Flange	1.4301 / 1.4404	1
3	Gasket	PTFE	2
4	Sight Glass Disc	Tempered	1
5	Screw	T304	6

Operating Conditions

These fittings are available for pressure up to 6 bar (depending on size, higher pressure rating on request). For temperature rating (depending on material selection) see the following diagram.

Ordering Information

sight glass wiper SW, size 3, wiper blade PTFE. If a sight glass disc is needed as well, please specify the following data:

- Borosilicate or Tempered glass
- Sight glass disc size (diameter XS)
- Nominal fittings diameter DN