

J&O[®]

J&O FLUID CONTROL CO., LIMITED

Aseptic Connection

J&O[®]

J&O FLUID CONTROL CO., LIMITED

Address: Binhai ETDZ, 5 Road, Longwan, Wenzhou, China. 325000

Tel: +86 577 8663 2750

Fax: +86 577 8663 2850

Mob./WhatsApp: +86 186 5778 5727

Site: www.sanitary-valves.com

Email: Info@jo-pv.com

With more than 15 years of market experiences, we have become the leading supplier service for pharmaceutical, chemical, food, Beverage and Lithium battery companies



Site Code



WhatsApp Code

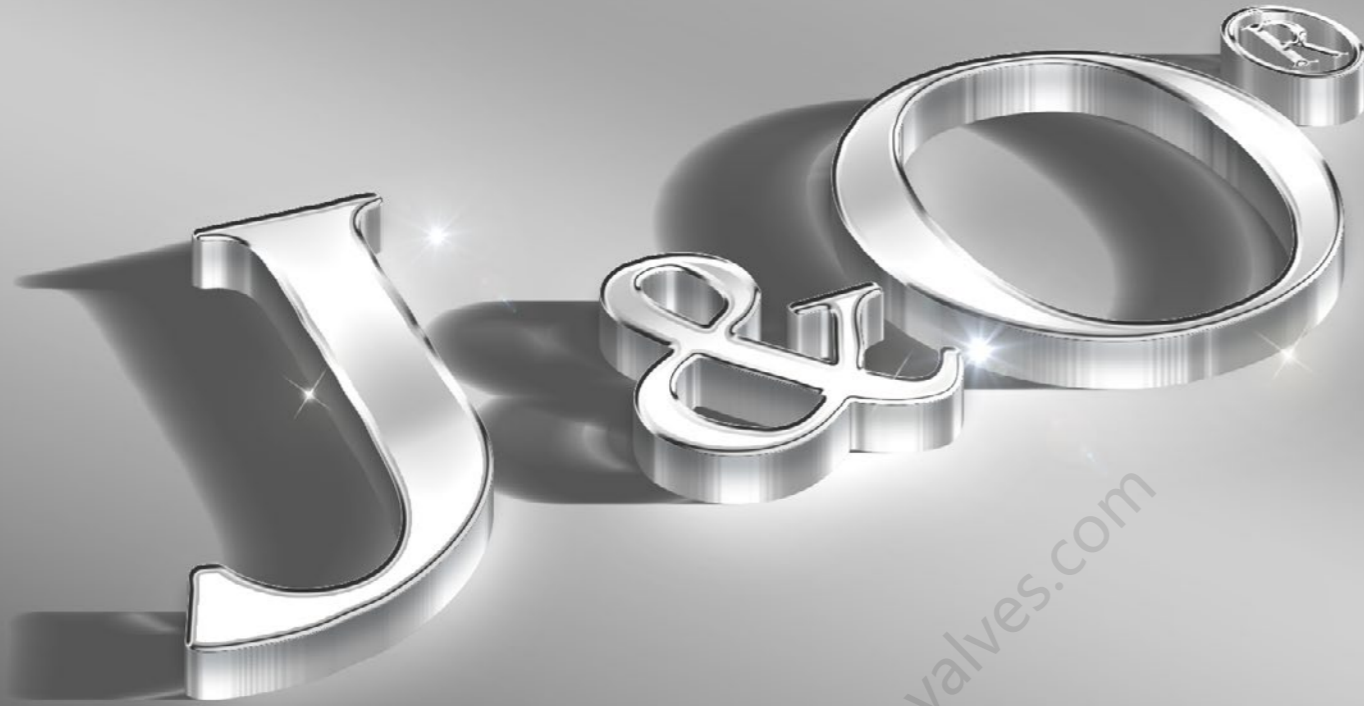
J&O BRAND, RELIABLE QUALITY FOR YOU

CE&ISO 9001:2015 CERTIFIED ACQUIRED

15 YEARS FLUID SOLUTION EXPERIENCES

EXPORTING TO OVER 40 COUNTRIES

EXCELLENT VALUE-ADDED SERVICE.



We focus on Details
We Make Different
J&O Brand,that can be trust.

J&O PROFILE

J&O Fluid Control Co., Limited established in 2008, a leading Manufacturer and Supplier of high quality hygienic stainless steel flow control equipments.

J&O services the Food, Dairy, Beverage, Cosmetic, Pharmaceutical, Biological engineering, Lithium battery, Semiconductor, Water treatment, Petroleum and Chemical industries.

J&O product series consists of sanitary stainless steel Valves & Fittings:

- >>Sanitary Stainless Steel Pumps
- >>Sanitary Stainless Steel Valves
- >>Stainless Steel Tank Accessories
- >>Stainless Steel Pipe Fittings
- >>Stainless Steel Flanges
- >>Stainless Steel Double Ferrule Tube Fittings
- >>Hydraulic Pneumatic Quick Coupling
- >>Carbon Steel Pipe Fittings
- >>Customized Valve and Fittings

Through the years, "Perfection" has been the only goal we pursue. In order to satisfy customers, with continuous efforts, we are working towards perfection through a Quality Assurance System. With persistence and effort, we have become one of the leading enterprises of sanitary valves and pipe fittings in China.

Our organization is dedicated to provide our customers with best service of every aspect. We strongly believe, that the friendship and trust given by our customers, is the great treasure we have.

J&O[®]
J&O FLUID CONTROL CO., LIMITED

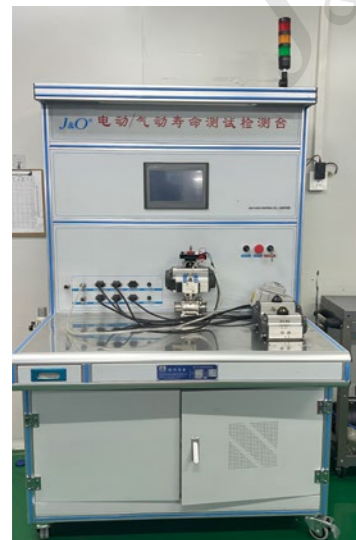
Certificate



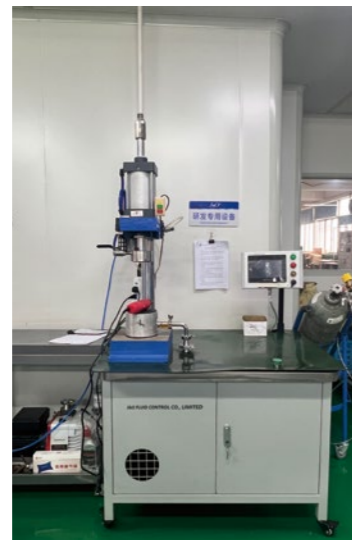
Plant & Producing



Testing Machine



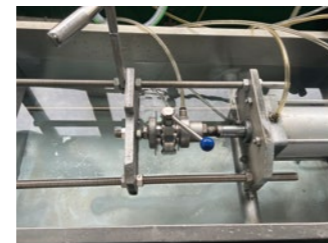
Actuator Testing



Helium Leak Detector



Pressure Test for Large Valve



Pressure Test for Small Valve

Aseptic Connection

Our Core Values: Team, Details, Altruism, Innovation and Embrace Change.

• Aseptic Connection

J&O FLUID CONTROL CO., LIMITED



Aseptic Connection

Summarize

J&O produce aseptic connecting fittings with DIN11864-1, DIN11864-2, DIN11864-3. They are made of forged steel, machined by CNC.

J&O provide 3.1B certification of EN10204 for all the steel material.

All sealing materials must comply with FDA177.2600.



Technical Date

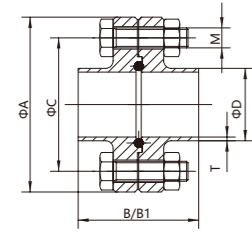
Standard	DIN11864-1, DIN11864-2, DIN11864-3
Size	1/2" - 4" DN10-DN150 17.2-88.9
Steel Material	304, 304L, 316, 316L Forging
Seal Material	NBR, Silicone, EPDM, FPM, PTFE
Surface Qualities	1.Ra ≤ 0.8μm
	2.Ra ≤ 0.6μm
	3.Ra ≤ 0.4 (Polished)

Ordering Specifications

- Specify:**
- Standard
 - Size
 - Steel material
 - Seal material
 - Surface quality
 - Quantity

Example						
Standard	Size	Steel Material	Seal Material	Surface Quality	Quantity	
3A-22	1.5"	304	/	1(Ra ≤ 0.8)	200	

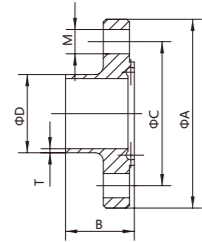
DIN



B1: JO-11864-2-FLC
B: JO-11853-2-FLC

DN 11864-2 / DIN 11853-2 Flange Connection

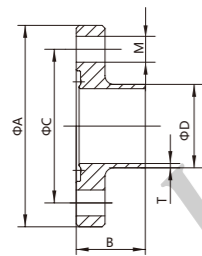
DN	A	B	B1	C	D	T	M
25	70	48	80	53	29	1.5	4×M8
32	76	48	90	59	35	1.5	4×M8
40	82	48	90	65	41	1.5	4×M8
50	94	48	90	77	53	1.5	4×M8
65	113	48	108	95	70	2	8×M8
80	133	52	116	112	85	2	8×M10
100	159	52	116	137	104	2	8×M10



JO-11853-2-NF

DIN11853-2 Nut Flange

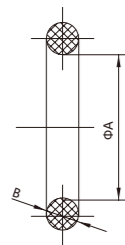
DN	A	B	C	D	T	M
25	70	25.5	53	29	1.5	4×ø9
32	76	25.5	59	35	1.5	4×ø9
40	82	25.5	65	41	1.5	4×ø9
50	94	25.5	77	53	1.5	4×ø9
65	113	25.5	95	70	2	8×ø9
80	133	27.5	112	85	2	8×ø11
100	159	27.5	137	104	2	8×ø11



JO-11853-2-LF

DIN11853-2 Liner Flange

DN	A	B	C	D	T	M
25	70	24	53	29	1.5	4×ø9
32	76	24	59	35	1.5	4×ø9
40	82	24	65	41	1.5	4×ø9
50	94	24	77	53	1.5	4×ø9
65	113	24	95	70	2	8×ø9
80	133	26	112	85	2	8×ø11
100	159	26	137	104	2	8×ø11

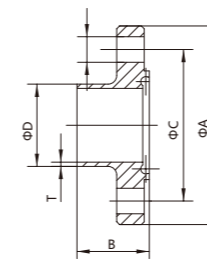


JO-11853-64HG

O Seal Ring

DN	A	B
25	28	3.5
32	34	5
40	40	5
50	52	5
65	68	5
80	83	5
100	102	5

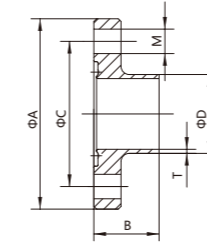
DIN



JO-11864-2-NF

DIN11864-2 Nut Flange

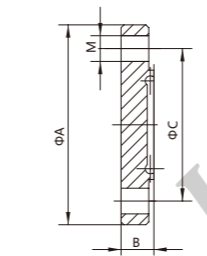
DN	A	B	C	D	T	M
25	70	41.5	53	29	1.5	4×ø9
32	76	46.5	59	35	1.5	4×ø9
40	82	46.5	65	41	1.5	4×ø9
50	94	46.5	77	53	1.5	4×ø9
65	113	55.5	95	70	2	8×ø9
80	133	59.5	112	85	2	8×ø11
100	159	59.5	137	104	2	8×ø11



JO-11864-2-LF

DIN11864-2 Liner Flange

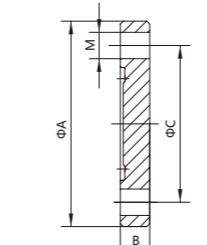
DN	A	B	C	D	T	M
25	70	40	53	29	1.5	4×ø9
32	76	45	59	35	1.5	4×ø9
40	82	45	65	41	1.5	4×ø9
50	94	45	77	53	1.5	4×ø9
65	113	54	95	70	2	8×ø9
80	133	58	112	85	2	8×ø11
100	159	58	137	104	2	8×ø11



JO-11864-2-BNF

DIN11864-2 Blind Nut Flange

DN	A	B	C	M
25	70	11.5	53	53
32	76	11.5	59	59
40	82	11.5	65	65
50	94	11.5	77	77
65	113	11.5	95	95
80	133	13.5	112	112
100	159	15.5	137	137

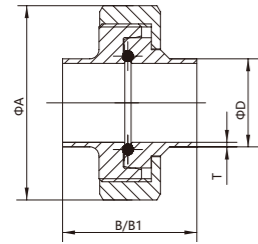


JO-11864-2-BLF

DIN11864-2 Blind Liner Flange

DN	A	B	C	M
25	70	10	53	4×ø9
32	76	10	59	4×ø9
40	82	10	65	4×ø9
50	94	10	77	4×ø9
65	113	10	95	8×ø9
80	133	12	112	8×ø11
100	159	14	137	8×ø11

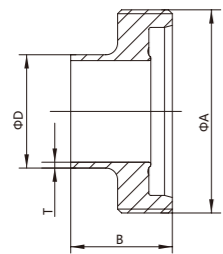
DIN



B1: JO-11864-1-UN
B: JO-11853-1-UN

DIN11864-1/ DIN 11853-1 Union

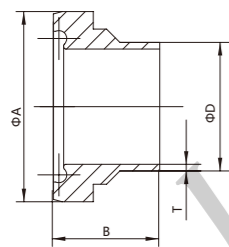
DN	A	B	B1	D	T
25	63	42	77	29	1.5
32	70	48	89	35	1.5
40	78	50	89	41	1.5
50	92	54	90	53	1.5
65	112	62	115	70	2
80	127	72	119	85	2
100	148	86	124	104	2



JO-11853-1-M

DIN11853-1 Male

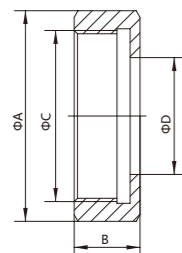
DN	A	B	D	T
25	RD52×1/6"	26	29	1.5
32	RD58×1/6"	30	35	1.5
40	RD65×1/6"	31	41	1.5
50	RD78×1/6"	31	53	1.5
65	RD95×1/6"	36	70	2
80	RD110×1/4"	42	85	2
100	RD130×1/4"	50	104	2



JO-11853-1-L

DIN11853-1 Liner

DN	A	B	D	T
25	42.9	22	29	1.5
32	48.9	25	35	1.5
40	54.9	26	41	1.5
50	66.9	30	53	1.5
65	84.9	34	70	2
80	98.9	38	85	2
100	118.9	46	104	2

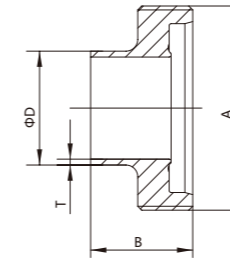


JO-11864-1-N

Nut

DN	A	B	C	D
25	63	21	RD52×1/6"	36
32	70	21	RD58×1/6"	42.5
40	78	21	RD65×1/6"	49
50	92	22	RD78×1/6"	62
65	112	25	RD95×1/6"	80
80	127	29	RD110×1/4"	94
100	148	31	RD130×1/4"	115

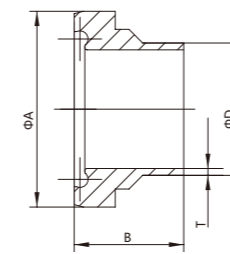
DIN



JO-11864-1-M

DIN11864-1 Male

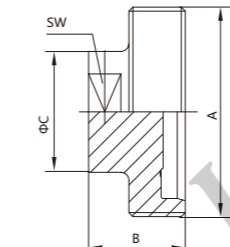
DN	A	B	D	T
25	RD52×1/6"	43	29	1.5
32	RD58×1/6"	48	35	1.5
40	RD65×1/6"	48	41	1.5
50	RD78×1/6"	48	53	1.5
65	RD95×1/6"	60	70	2
80	RD110×1/4"	64	85	2
100	RD130×1/4"	64	104	2



JO-11864-1-L

DIN11864-1 Liner

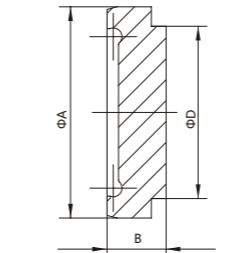
DN	A	B	D	T
25	42.9	40	29	1.5
32	48.9	47	35	1.5
40	54.9	47	41	1.5
50	66.9	48	53	1.5
65	84.9	61	70	2
80	98.9	61	85	2
100	118.9	66	104	2



JO-11864-1-BM

DIN 11864-1 Blind Male

DN	A	B	C	SW
25	RD52×1/6"	24	25	22
32	RD58×1/6"	24	34	27
40	RD65×1/6"	24	34	27
50	RD78×1/6"	24	34	27
65	RD95×1/6"	26	34	27
80	RD110×1/4"	30	34	27
100	RD130×1/4"	30	34	27

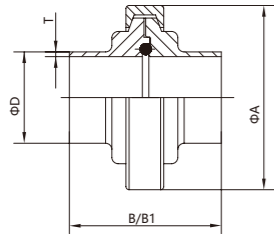


JO-11864-1-BL

DIN 11864-1 Blind Liner

DN	A	B	D
25	42.9	12	35
32	48.9	13	41
40	54.9	13	48
50	66.9	14	61
65	84.9	16	79
80	98.9	16	93
100	118.9	20	114

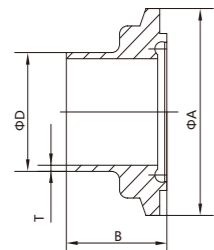
DIN



B1: JO-11864-3-CLC
B: JO-11853-3-CLC

DIN 11864-3/ DIN 11853-3 Clamp Connection

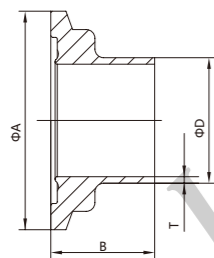
DN	A	B	B1	D	T
25	90	48	77	29	1.5
32	90	48	88	35	1.5
40	106	48	88	41	1.5
50	120	48	89	53	1.5
65	135	48	113	70	2
80	149	52	117	85	2
100	180	52	120	104	2



JO-11853-3-CLN

DIN11853-3 Clamp Nut

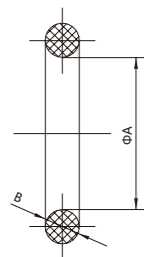
DN	A	B	D	T
25	50.5	25.5	29	1.5
32	50.5	25.5	35	1.5
40	64.0	25.5	41	1.5
50	77.5	25.5	53	1.5
65	91.0	25.5	70	2
80	106.0	27.5	85	2
100	130.0	27.5	104	2



JO-11853-3-CLL

DIN11853-3 Clamp Liner

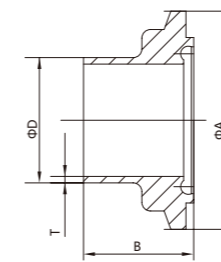
DN	A	B	D	T
25	50.5	24	29	1.5
32	50.5	24	35	1.5
40	64.0	24	41	1.5
50	77.5	24	53	1.5
65	91.0	24	70	2
80	106.0	26	85	2
100	130.0	26	104	2



O Seal Ring

DN	A	B
25	28	3.5
32	34	5
40	40	5
50	52	5
65	68	5
80	83	5
100	102	5

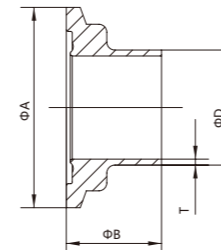
DIN



JO-11864-3-CLN

DIN11864-3 Clamp Nut

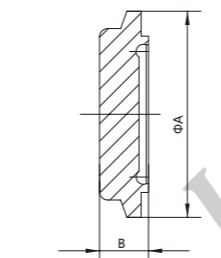
DN	A	B	D	T
25	50.5	40	29	1.5
32	50.5	45.5	35	1.5
40	64.0	45.5	41	1.5
50	77.5	46	53	1.5
65	91.0	58	70	2
80	106.0	60	85	2
100	130.0	61.5	104	2



JO-11864-3-CLL

DIN11864-3 Clamp Liner

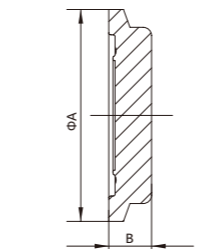
DN	A	B	D	T
25	50.5	38.5	29	1.5
32	50.5	44	35	1.5
40	64.0	44	41	1.5
50	77.5	44.5	53	1.5
65	91.0	56.5	70	2
80	106.0	58.5	85	2
100	130.0	60	104	2



JO-11864-3-BNC

DIN 11864-3 Blind Nut Clamp

DN	A	B
25	50.5	12
32	50.5	15.5
40	64.0	15.5
50	77.5	16
65	91.0	18
80	106.0	20
100	130.0	21.5

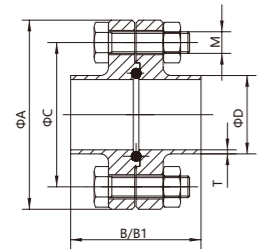


JO-11864-3-BLC

DIN11864-3 Blind Liner Clamp

DN	A	B
25	50.5	10.5
32	50.5	14
40	64.0	14
50	77.5	14.5
65	91.0	16.5
80	106.0	18.5
100	130.0	20

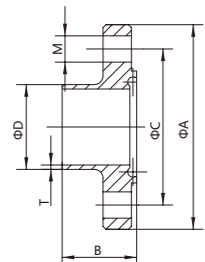
3A



B1: JO-11864-2C-FLC
B: JO-11853-2C-FLC

Flange Fittings

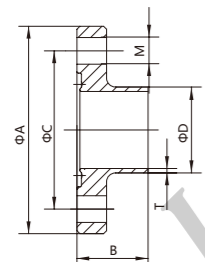
Size	A	B	B1	C	D	T	M
1"	66	48	80	49	25.4	1.65	4×M8
1.5"	79	48	90	62	38.1	1.65	4×M8
2"	92	48	90	75	50.8	1.65	4×M8
2.5"	107	48	108	89	63.5	1.65	8×M8
3"	125	52	112	104	76.2	1.65	8×M10
4"	157	52	116	135	101.6	2.11	8×M10



JO-11853-2C-NF

Protrude Flange

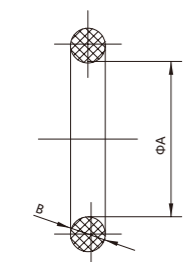
Size	A	B	C	D	T	M
1"	66	25.5	49	25.4	1.65	4× ϕ 9
1.5"	79	25.5	62	38.1	1.65	4× ϕ 9
2"	92	25.5	75	50.8	1.65	4× ϕ 9
2.5"	107	25.5	89	63.5	1.65	8× ϕ 9
3"	125	27.5	104	76.2	1.65	8× ϕ 11
4"	157	27.5	135	101.6	2.11	8× ϕ 11



JO-11853-2C-LF

Concave Flange

Size	A	B	C	D	T	M
1"	66	24	49	25.4	1.65	4× ϕ 9
1.5"	79	24	62	38.1	1.65	4× ϕ 9
2"	92	24	75	50.8	1.65	4× ϕ 9
2.5"	107	24	89	63.5	1.65	8× ϕ 9
3"	125	26	104	76.2	1.65	8× ϕ 11
4"	157	26	135	101.6	2.11	8× ϕ 11

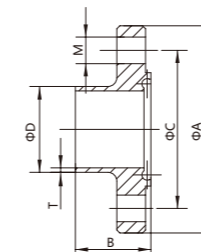


JO-11853-64CHG

O Seal Ring

DN	A	B
1"	24	3.5
1.5"	37	5
2"	50	5
2.5"	62	5

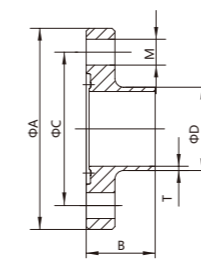
3A



JO-11864-2C-NF

Protrude Flange

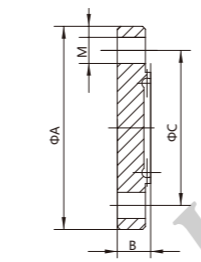
Size	A	B	C	D	T	M
1"	66	41.5	49	25.4	1.65	4× ϕ 9
1.5"	79	46.5	62	38.1	1.65	4× ϕ 9
2"	92	46.5	75	50.8	1.65	4× ϕ 9
2.5"	107	55.5	89	63.5	1.65	8× ϕ 9
3"	125	57.5	104	76.2	1.65	8× ϕ 11
4"	157	59.5	135	101.6	2.11	8× ϕ 11



JO-11864-2C-LF

Concave Flange

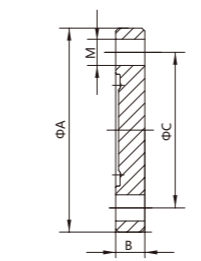
Size	A	B	C	D	T	M
1"	66	40	49	25.4	1.65	4× ϕ 9
1.5"	79	45	62	38.1	1.65	4× ϕ 9
2"	92	45	75	50.8	1.65	4× ϕ 9
2.5"	107	54	89	63.5	1.65	8× ϕ 9
3"	125	56	104	76.2	1.65	8× ϕ 11
4"	157	58	135	101.6	2.11	8× ϕ 11



JO-11864-2C-BNF

Blank Flange With Protrude

Size	A	B	C	M
1"	66	11.5	49	4× ϕ 9
1.5"	79	11.5	62	4× ϕ 9
2"	92	11.5	75	4× ϕ 9
2.5"	107	11.5	89	8× ϕ 9
3"	125	13.5	104	8× ϕ 11
4"	157	15.5	135	8× ϕ 11

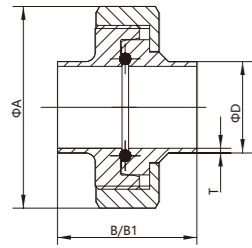


JO-11864-2CBLF

Blank Flange With Concave

Size	A	B	C	M
1"	66	10	49	4× ϕ 9
1.5"	79	10	62	4× ϕ 9
2"	92	10	75	4× ϕ 9
2.5"	107	10	89	8× ϕ 9
3"	125	12	104	8× ϕ 11
4"	157	14	135	8× ϕ 11

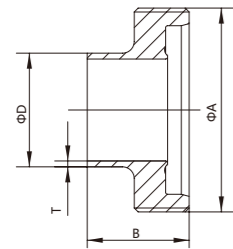
3A



B1: JO-11864-1C-UN
B: JO-11853-1C-UN

Unions

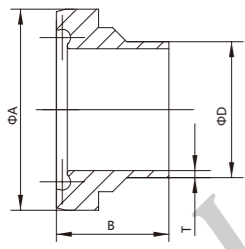
Size	A	B	B1	D	T
1"	63	42	77	25.4	1.65
1.5"	78	50	88	38.1	1.65
2"	92	54	89	50.8	1.65
2.5"	112	62	115	63.5	1.65
3"	127	72	117	76.2	1.65
4"	148	86	119	101.6	2.11



JO-11853-1C-M

Welding Male

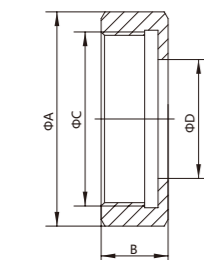
Size	A	B	D	T
1"	RD52×1/6"	26	25.4	1.65
1.5"	RD65×1/6"	31	38.1	1.65
2"	RD78×1/6"	31	50.8	1.65
2.5"	RD95×1/6"	36	63.5	1.65
3"	RD110×1/4"	42	76.2	1.65
4"	RD130×1/4"	50	101.6	2.11



JO-11853-1C-L

Welding Liner

Size	A	B	D	T
1"	42.9	22	25.4	1.65
1.5"	54.9	26	38.1	1.65
2"	66.9	30	50.8	1.65
2.5"	84.9	34	63.5	1.65
3"	98.9	38	76.2	1.65
4"	118.9	46	101.6	2.11

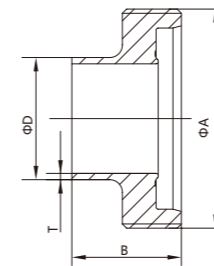


JO-11864-1C-N

Nut

Size	A	B	C	D
1"	63	21	RD52×1/6"	36
1.5"	78	21	RD65×1/6"	49
2"	92	22	RD78×1/6"	62
2.5"	112	25	RD95×1/6"	80
3"	127	29	RD110×1/4"	94
4"	148	31	RD130×1/4"	115

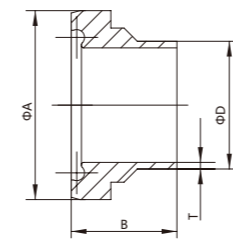
3A



JO-11864-1C-M

Welding Male

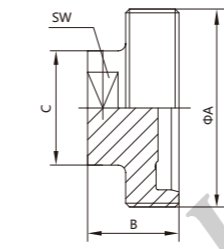
Size	A	B	D	T
1"	RD52×1/6"	43	25.4	1.65
1.5"	RD65×1/6"	48.5	38.1	1.65
2"	RD78×1/6"	48.5	50.8	1.65
2.5"	RD95×1/6"	60	63.5	1.65
3"	RD110×1/4"	64	76.2	1.65
4"	RD130×1/4"	64	101.6	2.11



JO-11864-1C-L

Welding Liner

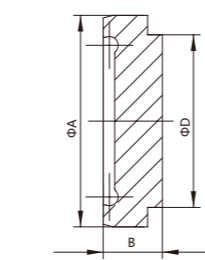
Size	A	B	D	T
1"	42.9	40	25.4	1.65
1.5"	54.9	46.5	38.1	1.65
2"	66.9	47.5	50.8	1.65
2.5"	84.9	63	63.5	1.65
3"	98.9	61	76.2	1.65
4"	118.9	65	101.6	2.11



JO-11864-1C-BM

Blank Male

Size	A	B	C	SW
1"	RD52×1/6"	24	25	22
1.5"	RD65×1/6"	24	34	27
2"	RD78×1/6"	24	34	27
2.5"	RD95×1/6"	26	34	27
3"	RD110×1/4"	30	34	27
4"	RD130×1/4"	30	34	27

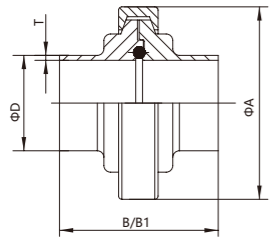


JO-11864-1C-BL

Blank Liner

Size	A	B	D
1"	42.9	12	35
1.5"	54.9	13	48
2"	66.9	14	61
2.5"	84.9	16	79
3"	98.9	16	93
4"	118.9	20	114

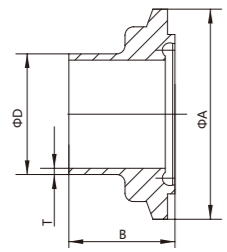
3A



B1: JO-11864-3C-CLC
B: JO-11853-3C-CLC

Clamp Fittings (3A-KS)

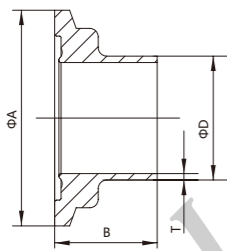
Size	A	B	B1	D	T
1"	90	48	77	25.4	1.65
1.5"	106	48	88	38.1	1.65
2"	120	48	89	50.8	1.65
2.5"	135	48	115	63.5	1.65
3"	149	52	117	76.2	1.65
4"	180	52	119	101.6	2.11



JO-11853-3C-CLN

Ferrule With Protrude

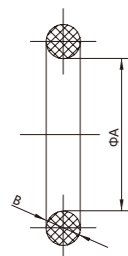
Size	A	B	D	T
1"	50.5	25.5	25.4	1.65
1.5"	64	25.5	38.1	1.65
2"	77.5	25.5	50.8	1.65
2.5"	91	25.5	63.5	1.65
3"	106	27.5	76.2	1.65
4"	130	27.5	101.6	2.11



JO-11853-3C-CLL

Ferrule With Concave

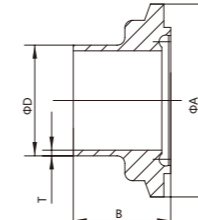
Size	A	B	D	T
1"	50.5	24	25.4	1.65
1.5"	64	24	38.1	1.65
2"	77.5	24	50.8	1.65
2.5"	91	24	63.5	1.65
3"	106	26	76.2	1.65
4"	130	26	101.6	2.11



O Seal Ring

Size	A	B
1"	24	3.5
1.5"	37	5
2"	50	5
2.5"	62	5
3"	75	5
4"	100	5

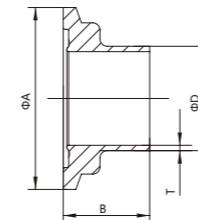
3A



JO-11864-3C-CLN

Ferrule With Protrude (3A-41L)

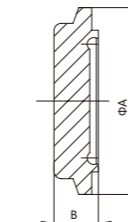
Size	A	B	D	T
1"	50.5	40	25.4	1.65
1.5"	64	45.5	38.1	1.65
2"	77.5	46	50.8	1.65
2.5"	91	59	63.5	1.65
3"	106	60	76.2	1.65
4"	130	61	101.6	2.11



JO-11864-3C-CLL

Ferrule With Concave (3A-42L)

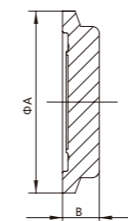
Size	A	B	D	T
1"	50.5	38.5	25.4	1.65
1.5"	64	44	38.1	1.65
2"	77.5	44.5	50.5	1.65
2.5"	91	57.5	63.5	1.65
3"	106	58.5	76.2	1.65
4"	130	59.5	101.6	2.11



JO-11864-3C-BNC

Blank Ferrule With Protrude (3A-41B)

Size	A	B
1"	50.5	12
1.5"	64	15.5
2"	77.5	16
2.5"	91	19
3"	106	20
4"	130	21

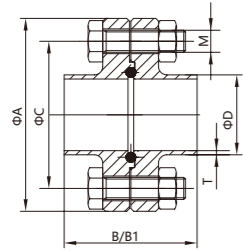


JO-11864-3C-BLC

Blank Ferrule With Concave (3A-42B)

Size	A	B
1"	50.5	10.5
1.5"	64	14
2"	77.5	14.5
2.5"	91	17.5
3"	106	18.5
4"	130	19.5

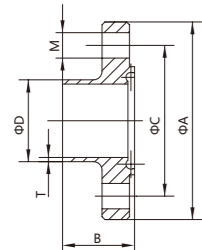
ISO



B1: JO-11864-2B-FLC
B: JO-11853-2B-FLC

Flange Fittings

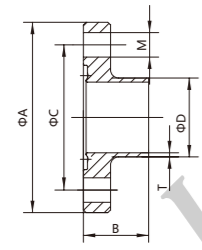
Size	A	B	B1	C	D	T	M
26.9	69	48	80	52	26.9	1.6	4×M8
33.7	74	48	90	57	33.7	2	4×M8
42.4	82	48	90	65	42.4	2	4×M8
48.3	88	48	90	71	48.3	2	4×M8
60.3	103	48	108	85	60.3	2	4×M8
76.1	125	52	112	104	76.1	2.3	8×M11
88.9	137	52	120	116	88.9	2.3	8×M11



JO-11853-2B-NF

Protrude Flange

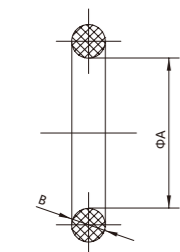
Size	A	B	C	D	T	M
26.9	69	25.5	52	26.9	1.6	4×ø9
33.7	74	25.5	57	33.7	2	4×ø9
42.4	82	25.5	65	42.4	2	4×ø9
48.3	88	25.5	71	48.3	2	4×ø9
60.3	103	25.5	85	60.3	2	4×ø9
76.1	125	27.5	104	76.1	2	8×ø11
88.9	137	27.5	116	88.9	2.3	8×ø11



JO-11853-2B-LF

Concave Flange

Size	A	B	C	D	T	M
26.9	69	24	52	26.9	1.6	4×ø9
33.7	74	24	57	33.7	2	4×ø9
42.4	82	24	65	42.4	2	4×ø9
48.3	88	24	71	48.3	2	4×ø9
60.3	103	24	85	60.3	2	4×ø9
76.1	125	26	104	76.1	2	8×ø11
88.9	137	26	116	88.9	2.3	8×ø11

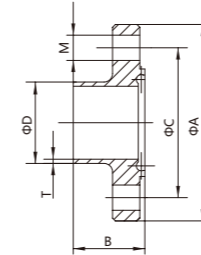


JO-11853-64BHG

O Seal Ring

Size	A	B
26.9	26	3.5
33.7	32	5
42.4	40.5	5
48.3	46.5	5
60.3	58.5	5
76.1	73.5	5
88.9	86.5	5

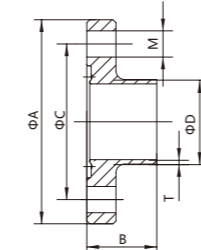
ISO



JO-11864-2B-NF

Protrude Flange

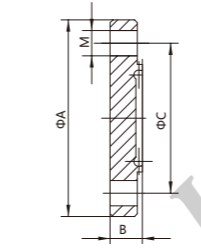
Size	A	B	C	D	T	M
26.9	69	41.5	52	26.9	1.6	4×ø9
33.7	74	46.5	57	33.7	2	4×ø9
42.4	82	46.5	65	42.4	2	4×ø9
48.3	88	46.5	71	48.3	2	4×ø9
60.3	103	55.5	85	60.3	2	4×ø9
76.1	125	57.5	104	76.1	2	8×ø11
88.9	137	59.5	116	88.9	2.3	8×ø11



JO-11864-2B-LF

Concave Flange

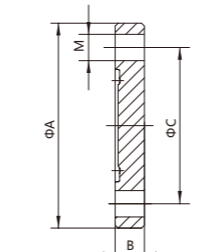
Size	A	B	C	D	T	M
26.9	69	40	52	26.9	1.6	4×ø9
33.7	74	45	57	33.7	2	4×ø9
42.4	82	45	65	42.4	2	4×ø9
48.3	88	45	71	48.3	2	4×ø9
60.3	103	54	85	60.3	2	4×ø9
76.1	125	56	104	76.1	2	8×ø11
88.9	137	58	116	88.9	2.3	8×ø11



JO-11864-2B-BNF

Blank Flange With Protrude

Size	A	B	C	M
26.9	69	11.5	52	4×ø9
33.7	74	11.5	57	4×ø9
42.4	82	11.5	65	4×ø9
48.3	88	11.5	71	4×ø9
60.3	103	11.5	85	4×ø9
76.1	125	13.5	104	8×ø11
88.9	137	13.5	116	8×ø11

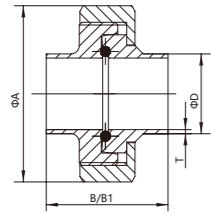


JO-11864-2B-BLF

Blank Flange With Concave

Size	A	B	C	M
26.9	69	10	52	4×ø9
33.7	74	10	57	4×ø9
42.4	82	10	65	4×ø9
48.3	88	10	71	4×ø9
60.3	103	10	85	4×ø9
76.1	125	12	104	8×ø11
88.9	137	12	116	8×ø11

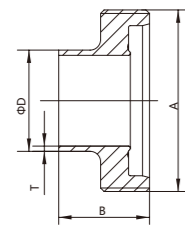
ISO



B1: JO-11864-1B-UN
B: JO-11853-1B-UN

Unions

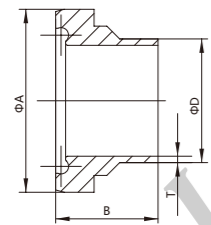
Size	A	B	B1	D	T
26.9	63	42	78	26.9	1.6
33.7	70	48	88	33.7	2
42.4	78	50	88	42.4	2
48.3	92	54	90	48.3	2
60.3	112	62	114	60.3	2
76.1	127	72	117	76.1	2
88.9	148	86	122	88.9	2.3



JO-11853-1B-M

Welding Male

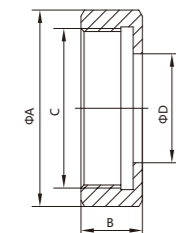
Size	A	B	D	T
26.9	RD52×1/6"	26	26.9	1.6
33.7	RD58×1/6"	30	33.7	2
42.4	RD65×1/6"	31	42.4	2
48.3	RD78×1/6"	31	48.3	2
60.3	RD95×1/6"	36	60.3	2
76.1	RD110×1/4"	42	76.1	2
88.9	RD130×1/4"	50	88.9	2.3



JO-11853-1B-L

Welding Liner

Size	A	B	D	T
26.9	42.9	22	26.9	1.6
33.7	48.9	25	33.7	2
42.4	54.9	26	42.4	2
48.3	66.9	30	48.3	2
60.3	84.9	34	60.3	2
76.1	98.9	38	76.1	2
88.9	118.9	46	88.9	2.3

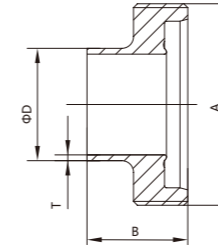


JO-11864-1B-N

Nut (DIN-13)

Size	A	B	C	D
26.9	63	21	RD52×1/6"	36
33.7	70	21	RD58×1/6"	42.5
42.4	78	21	RD65×1/6"	49
48.3	92	22	RD78×1/6"	62
60.3	112	25	RD95×1/6"	80
76.1	127	29	RD110×1/4"	94
88.9	148	31	RD130×1/4"	115

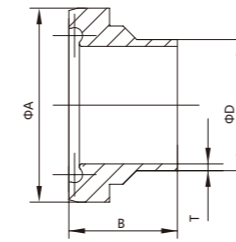
ISO



JO-11864-1B-M

Welding Male

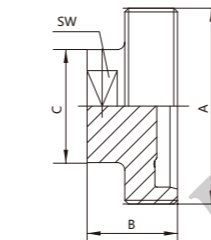
Size	A	B	D	T
26.9	RD52×1/6"	43	26.9	1.6
33.7	RD58×1/6"	48	33.7	2
42.4	RD65×1/6"	48	42.4	2
48.3	RD78×1/6"	49	48.3	2
60.3	RD95×1/6"	60	60.3	2
76.1	RD110×1/4"	64	76.1	2
88.9	RD130×1/4"	64	88.9	2.3



JO-11864-1B-L

Welding Liner

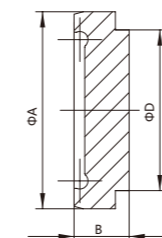
Size	A	B	D	T
26.9	42.9	41	26.9	1.6
33.7	48.9	47	33.7	2
42.4	54.9	47	42.4	2
48.3	66.9	48	48.3	2
60.3	84.9	62	60.3	2
76.1	98.9	61	76.1	2.3
88.9	118.9	68	88.9	2.3



JO-11864-1B-BM

Blank Male

Size	A	B	C	SW
26.9	RD52×1/6"	24	25	22
33.7	RD58×1/6"	24	34	27
42.4	RD65×1/6"	24	34	27
48.3	RD78×1/6"	24	34	27
60.3	RD95×1/6"	26	34	27
76.1	RD110×1/4"	30	34	27
88.9	RD130×1/4"	30	34	27

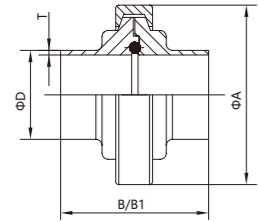


JO-11864-1B-BL

Blank Liner

Size	A	B	D
26.9	42.9	12	35
33.7	48.9	13	48
42.4	54.9	13	61
48.3	66.9	14	79
60.3	84.9	16	93
76.1	98.9	16	114
88.9	118.9	20	

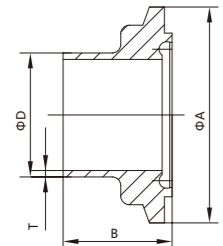
ISO



B1: JO-11864-3B-CLC
B: JO-11853-3B-CLC

Clamp Fittings

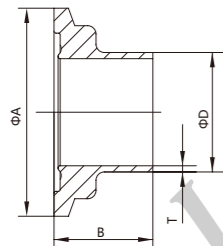
Size	A	B	B1	D	T
26.9	90	48	78	26.9	1.6
33.7	90	48	88	33.7	2
42.4	106	48	88	42.4	2
48.3	106	48	90	48.3	2
60.3	135	48	114	60.3	2
76.1	149	52	117	76.1	2.3
88.9	162	52	122	88.9	2.3



JO-11853-3B-CLN

Ferrule With Protrude

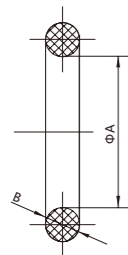
Size	A	B	D	T
26.9	50.5	25.5	26.9	1.6
33.7	50.5	25.5	33.7	2
42.4	64	25.5	42.4	2
48.3	64	25.5	48.3	2
60.3	91	25.5	60.3	2
76.1	106	27.5	76.1	2.3
88.9	119	27.5	88.9	2.3



JO-11853-3B-CLL

Ferrule With Concave

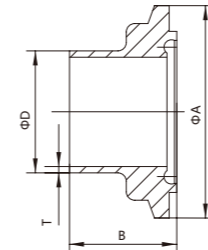
Size	A	B	D	T
26.9	50.5	24	26.9	1.6
33.7	50.5	24	33.7	2
42.4	64	24	42.4	2
48.3	64	24	48.3	2
60.3	91	24	60.3	2
76.1	106	26	76.1	2.3
88.9	119	26	88.9	2.3



O Seal Ring

Size	A	B
26.9	26	3.5
33.7	32	5
42.4	40.5	5
48.3	46.5	5
60.3	58.5	5
76.1	73.5	5
88.9	86.5	5

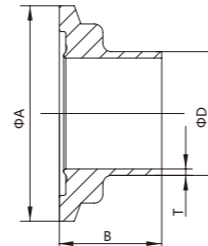
ISO



JO-11864-3B-CLN

Ferrule With Protrude

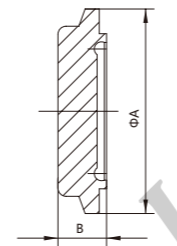
Size	A	B	D	T
26.9	50.5	40	26.9	1.6
33.7	50.5	45.5	33.7	2
42.4	64	45.5	42.4	2
48.3	64	46.5	48.3	2
60.3	91	58.5	60.3	2
76.1	106	60	76.1	2.3
88.9	119	62.5	88.9	2.3



JO-11864-3B-CLL

Ferrule With Concave

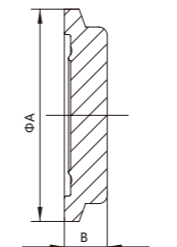
Size	A	B	D	T
26.9	50.5	39	26.9	1.6
33.7	50.5	44	33.7	2
42.4	64	44	42.4	2
48.3	64	45	48.3	2
60.3	91	57	60.3	2
76.1	106	58.5	76.1	2.3
88.9	119	61	88.9	2.3



JO-11864-3B-BNC

Blank Ferrule With Protrude

Size	A	B
26.9	50.5	12
33.7	50.5	15.5
42.4	64	15.5
48.3	64	16
60.3	91	18
76.1	106	20
88.9	119	21.5



JO-11864-3B-BLC

Blank Ferrule With Concave

Size	A	B
26.9	50.5	10.5
33.7	50.5	14
42.4	64	14
48.3	64	14.5
60.3	91	16.5
76.1	106	18.5
88.9	119	20