

J&O®

J&O FLUID CONTROL CO., LIMITED

Sanitary Ferrule Adapter & Hose Fittings

J&O®

J&O FLUID CONTROL CO., LIMITED

Address: Binhai ETDZ, 5 Road, Longwan, Wenzhou, China. 325000

Tel: +86 577 8663 2750

Fax: +86 577 8663 2850

Mob./WhatsApp: +86 186 5778 5727

Site: www.sanitary-valves.com

Email: Info@jo-pv.com

With more than 15 years of market experiences, we have become the leading supplier service for pharmaceutical, chemical, food, Beverage and Lithium battery companies



Site Code



WhatsApp Code

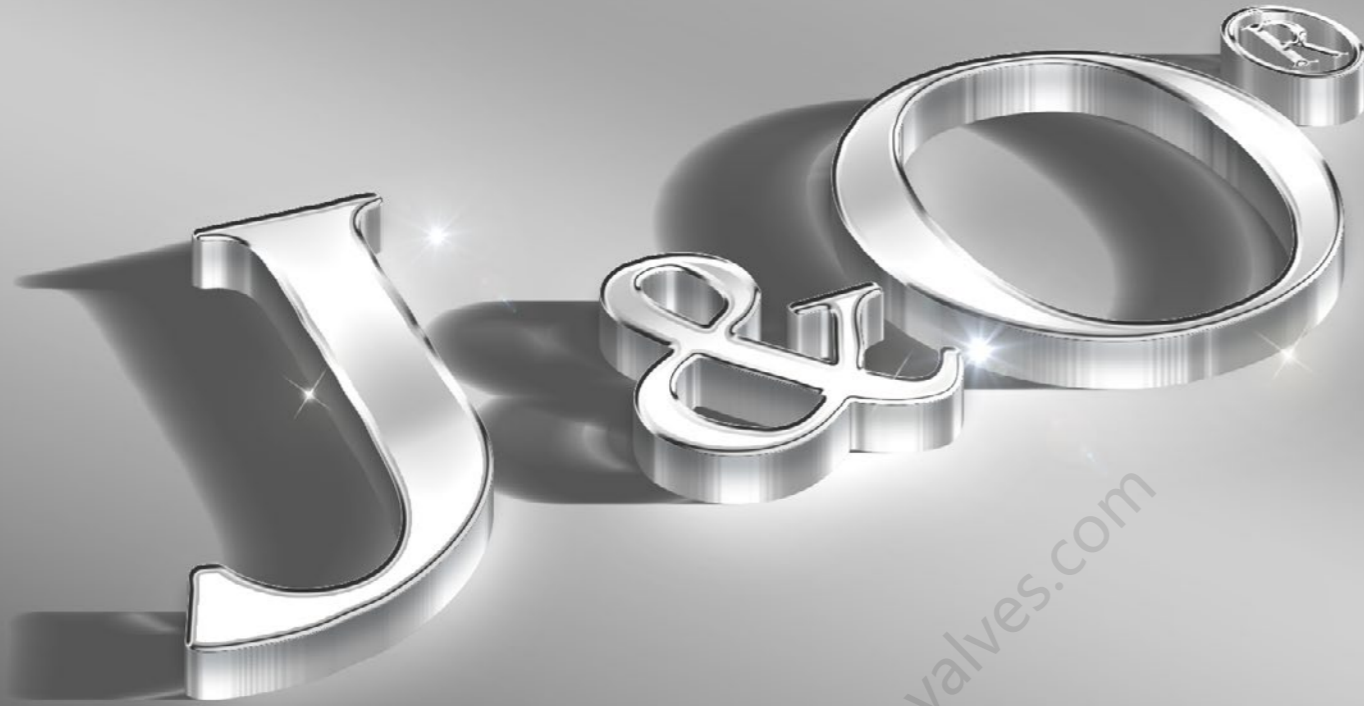
J&O BRAND, RELIABLE QUALITY FOR YOU

CE&ISO 9001:2015 CERTIFIED ACQUIRED

15 YEARS FLUID SOLUTION EXPERIENCES

EXPORTING TO OVER 40 COUNTRIES

EXCELLENT VALUE-ADDED SERVICE.



We focus on Details
We Make Different
J&O Brand,that can be trust.

J&O PROFILE

J&O Fluid Control Co., Limited established in 2008, a leading Manufacturer and Supplier of high quality hygienic stainless steel flow control equipments.

J&O services the Food, Dairy, Beverage, Cosmetic, Pharmaceutical, Biological engineering, Lithium battery, Semiconductor, Water treatment, Petroleum and Chemical industries.

J&O product series consists of sanitary stainless steel Valves & Fittings:

- >>Sanitary Stainless Steel Pumps
- >>Sanitary Stainless Steel Valves
- >>Stainless Steel Tank Accessories
- >>Stainless Steel Pipe Fittings
- >>Stainless Steel Flanges
- >>Stainless Steel Double Ferrule Tube Fittings
- >>Hydraulic Pneumatic Quick Coupling
- >>Carbon Steel Pipe Fittings
- >>Customized Valve and Fittings

Through the years, "Perfection" has been the only goal we pursue. In order to satisfy customers, with continuous efforts, we are working towards perfection through a Quality Assurance System. With persistence and effort, we have become one of the leading enterprises of sanitary valves and pipe fittings in China.

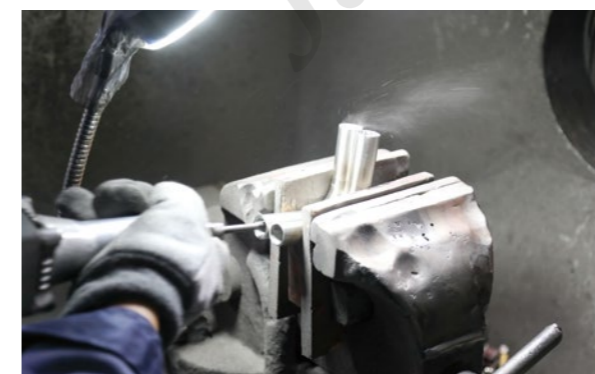
Our organization is dedicated to provide our customers with best service of every aspect. We strongly believe, that the friendship and trust given by our customers, is the great treasure we have.

J&O[®]
J&O FLUID CONTROL CO., LIMITED

Certificate



Plant & Producing



Testing Machine



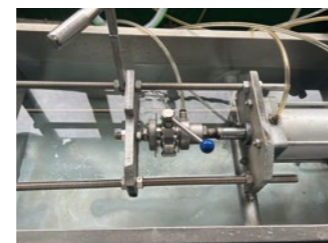
Actuator Testing



Helium Leak Detector



Pressure Test for Large Valve

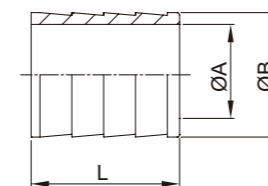


Pressure Test for Small Valve

3A

Sanitary Ferrule Adapter & Hose Fittings

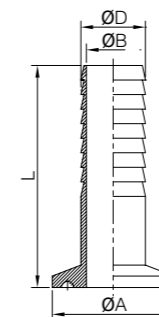
Our Core Values: Team, Details, Altruism, Innovation and Embrace Change.



JOF-14WHR

14WHR Hose Adapter

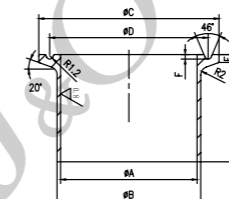
Size	ØA	ØB	ØC	L
1/2"	9.5	13.7	25.2	25.3
3/4"	15.8	21.4	25.2	25.3
1.0"	20.6	25.4	50.5	30.3
1.5"	33.2	38.1	64	30.3
2.0"	46	50.8	50.5	46
2.5"	58.7	63.5	77.5	46.8
3.0"	72	76.2	91	65.9
4.0"	97.6	101.6	119	72.8



JOF-14MPHR

14MPHR Rubber Hose Adapter

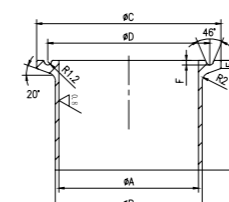
Size	A	B	D	L
1/2"	25.2	9.0	12.7	50.8
3/4"	25.2	15.0	19.0	50.8
1"	50.5	21.4	25.4	114.3
1 1/4"	50.5	27.8	31.8	114.3
1 1/2"	50.5	34.0	38.1	114.3
2"	64.0	47.0	50.8	114.3
2 1/2"	77.5	59.5	63.5	114.3
3"	91.0	72.2	76.2	114.3
4"	119.0	97.6	101.6	114.3



JOF-14WLMP

14WLMP Ferrule

Size	A	B	C	H
1"	22.10	25.40	50.40	76.20
1 1/2"	34.80	38.10	50.40	76.20
2"	47.50	50.80	63.90	76.20
2 1/2"	60.20	63.50	77.40	76.20
3"	72.90	76.20	90.90	101.60
4"	97.40	101.60	118.92	101.60
6"	146.86	152.40	166.88	152.40

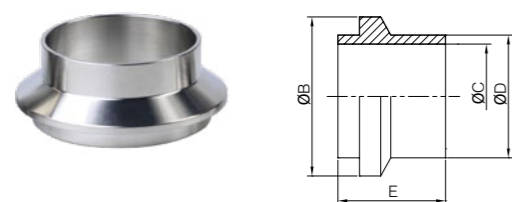


JOF-14MPW

14MPW Ferrule

Size	A	B	C	H
1"	22.10	29.46	50.40	41.28
1 1/2"	34.80	42.57	50.40	41.28
2"	47.50	55.68	63.90	44.45
2 1/2"	60.20	68.78	77.40	44.45
3"	72.90	81.89	90.90	46.05
4"	97.40	108.1	118.92	53.98
6"	146.86	157.28	166.88	63.50

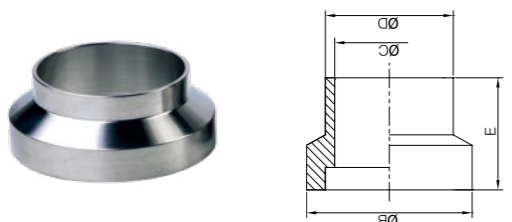
3A



JOF-14WI / JOF-14WIL

14WI / 14WIL Ferrule

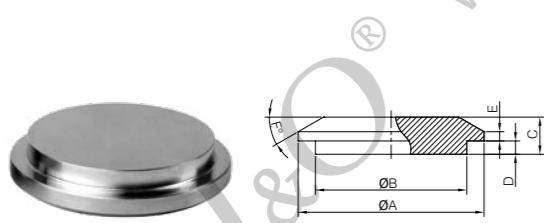
Size	B	C	D	E	14WI	14WIL
1"	50.67	22.1	25.65	19.84	19.84	44.5
1 1/2"	50.67	34.8	38.35	23.8	23.8	46.7
2"	67.06	47.5	51.05	26.19	26.19	58.9
2 1/2"	84.0	60.2	63.75	29.36	29.36	63.4
3"	98.3	72.9	76.45	30.94	30.94	68.2
4"	123.7	97.38	101.85	34.11	34.11	76.2



JOF-15WI / JOF-15WIL

15WI / 15WIL Ferrule

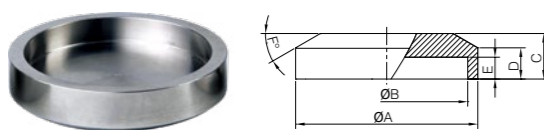
Size	B	C	D	E	15WI	15WIL
1"	50.67	22.1	25.65	19.84	19.84	44.5
1 1/2"	50.67	34.8	38.35	23.8	23.8	46.7
2"	67.06	47.5	51.05	26.19	26.19	58.9
2 1/2"	84.0	60.2	63.75	29.36	29.36	63.4
3"	98.3	72.9	76.45	30.94	30.94	68.2
4"	123.7	97.38	101.85	34.11	34.11	76.2



JOF-16AI-14WI

16AI-14WI Male Solid End Cap

Size	A	B	C	D	E	F
1"	50.42	31.75	12.70	4.95	2.67	37°
1 1/2"	50.42	44.20	12.70	4.95	2.67	37°
2"	67.06	56.90	14.27	6.48	2.33	37°
2 1/2"	84.00	69.60	19.05	7.87	3.20	37°
3"	98.30	83.82	17.78	7.87	3.20	37°
4"	123.70	109.14	19.05	7.87	3.20	37°
6"	190.37	173.48	22.35	4.72	3.20	30°
8"	241.17	224.28	22.35	4.72	3.20	30°

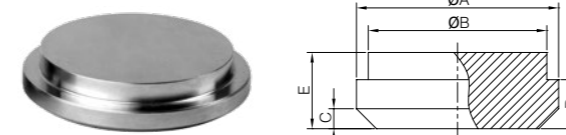


JOF-16AI-15WI

16AI-15WI Female Solid End Cap

Size	A	B	C	D	E	F
1"	50.42	32.13	12.70	8.0	6.32	37°
1 1/2"	50.42	44.58	12.70	8.0	6.32	37°
2"	67.06	57.28	14.27	11.61	7.85	37°
2 1/2"	84.00	69.98	19.05	11.13	9.25	37°
3"	98.30	84.20	17.78	11.13	9.25	37°
4"	123.70	109.60	19.05	11.13	9.25	37°
6"	190.37	175.74	22.35	11.13	6.10	30°
8"	241.17	226.54	22.35	11.13	6.10	30°

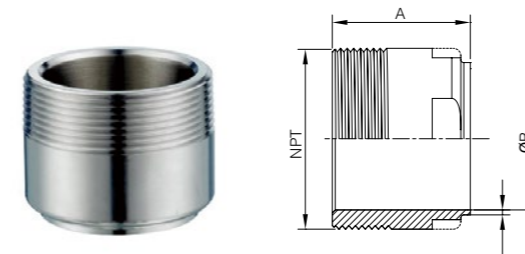
3A



JOF-16A

16A End Cap

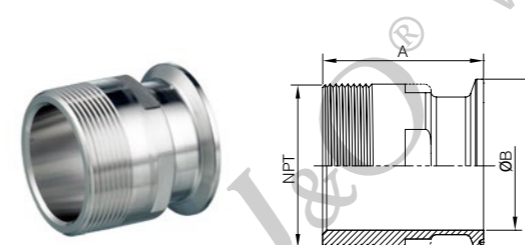
Size	A	B	C	D	E
1"	33.4	29.5	3.3	8.1	12.6
1.5"	46.8	42.6	4.0	8.7	14.3
2"	60.5	55.7	4.0	10.4	16.0
2.5"	73.9	68.8	4.8	11.9	18.2
3"	87.5	81.9	4.8	11.9	18.3
4"	114.5	108.1	6.3	14.2	20.6



JOF-19WB

19WB Weld-Male NPT Adapter

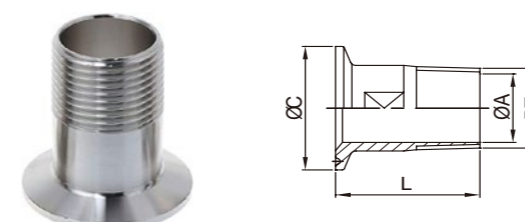
Size	A	B	T	NPT
1/2"	41.3	9.4	1.65	NPT1/2×14
3/4"	41.3	15.8	1.65	NPT3/4×14
1"	44.5	22.1	1.65	NPT1×11.5
1 1/4"	44.5	28.5	1.65	NPT1 1/4×11.5
1 1/2"	44.5	34.8	1.65	NPT1 1/2×11.5
2"	46.0	47.5	1.65	NPT2×11.5
2 1/2"	58.7	60.2	1.65	NPT2 1/2×8
3"	63.5	72.9	1.65	NPT3×8
4"	65.1	97.4	2.1	NPT4×8



JOF-1914MP

19-14MP NPT Male Clamped Adapter

Size	A	B	C	NPT
1/2"	54.0	9.4	25.1	NPT1/2×14
3/4"	54.0	15.8	25.1	NPT3/4×14
1"	57.2	22.1	50.4	NPT1×11.5
1 1/4"	57.2	28.5	50.4	NPT1 1/4×11.5
1 1/2"	57.2	34.8	50.4	NPT1 1/2×11.5
2"	58.7	47.5	63.9	NPT2×11.5
2 1/2"	71.4	60.2	77.4	NPT2 1/2×8
3"	76.2	72.9	90.9	NPT3×8
4"	81.0	97.4	118.9	NPT4×8



JOF-21MP02

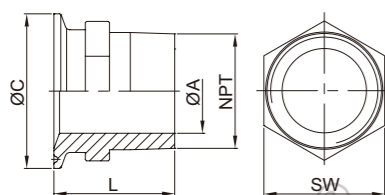
21MP (Plain Milling)

Size	ØA	ØC	PT	L
1.0"×1.5"×1/4"	8.56	50.5	1/4"	40
1.0"×1.5"×3/8"	12.7	50.5	3/8"	40
1.0"×1.5"×1/2"	15.5	50.5	1/2"	45
1.0"×1.5"×3/4"	21.3	50.5	3/4"	45
1"×1.5"×1.0"	28	50.5	1.0"	50
1.0"×1.5"×1 1/4"	34.8	50.5	1 1/4"	50
2.0"×1.0"	28	64	1.0"	50
2.0"×1 1/4"	35.7	64	1 1/4"	50
2.0"×1.5"	41.8	64	1 1/2"	50
2.0"×2.0"	47.5	64	2.0"	54.7

3A

21MP (Hexagon)

Size	ØA	ØC	NPT	L	SW
1/2"×1/2"	9.5	25	1/2"	45	24
3/4"×1/4"	7.95	25	1/4"	45	24
3/4"×1/2"	15.8	25	1/2"	45	24
3/4"×3/4"	15.8	25	3/4"	45	30
1.0"×1.5"×1/4"	3.18	50.5	1/4"	40	17
1.0"×1.5"×3/8"	6.35	50.5	3/8"	40	19
1.0"×1.5"×1/2"	9.5	50.5	1/2"	40	24
1.0"×1.5"×3/4"	15.8	50.5	3/4"	45	32
1"×1.5"×1.0"	22.2	50.5	1.0"	50	35
1.0"×1.5"×1 1/4"	28.6	50.5	1 1/4"	50	50
1.0"×1.5"×1.5"	34.9	50.5	1.5"	50	50
1.0"×1.5"×2.0"	47.6	50.5	2.0"	55	65
2.0"×1/4"	3.18	64	1/4"	40	50
2.0"×3/8"	6.35	64	3/8"	40	50
2.0"×1/2"	9.5	64	1/2"	40	50
2.0"×3/4"	15.8	64	3/4"	50	50
2.0"×1.0"	22.2	64	1.0"	50	50
2.0"×1.5"	34.9	64	1.5"	50	50
2.0"×2.0"	47.6	64	2.0"	55	65
2.0"×2.5"	60.3	64	2.5"	60	65
2.0"×3.0"	73	64	3.0"	70	90
2.0"×4.0"	97.6	64	4.0"	75	115
2.5"×1.0"	22.2	77.5	1.0"	50	75
2.5"×1.5"	34.9	77.5	1.5"	50	75
2.5"×2.0"	47.6	77.5	2.0"	55	75
2.5"×2.5"	60.3	77.5	2.5"	60	75
2.5"×3.0"	73	77.5	3.0"	70	90
2.5"×4.0"	97.6	77.5	4.0"	75	115
3.0"×1.0"	22.2	91	1.0"	55	90
3.0"×1.5"	34.9	91	1.5"	55	90
3.0"×2.0"	47.6	91	2.0"	55	90
3.0"×2.5"	60.3	91	2.5"	60	90
3.0"×3.0"	73	91	3.0"	70	90
3.0"×4.0"	97.6	91	4.0"	75	90
4.0"×1.0"	22.2	119	1.0"	55	115
4.0"×1.5"	34.9	119	1.5"	55	115
4.0"×2.0"	47.6	119	2.0"	55	115
4.0"×2.5"	60.3	119	2.5"	60	115
4.0"×3.0"	73	119	3.0"	70	115
4.0"×4.0"	97.6	119	4.0"	75	115

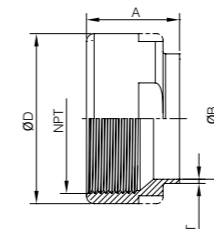


JOF-21MP01

3A

22WB NPT Female Welded Adapter

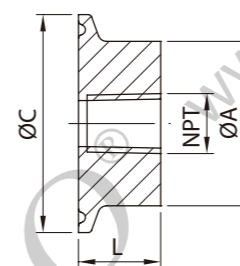
Size	A	B	T	NPT	D
1/2"	28.6	9.4	1.65	NPT 1/2×14	30.0
3/4"	28.6	15.8	1.65	NPT 3/4×14	33.3
1"	28.6	22.1	1.65	NPT 1×11.5	41.3
1 1/4"	36.5	28.5	1.65	NPT 1 1/4×11.5	47.6
1 1/2"	36.5	34.8	1.65	NPT 1 1/2×11.5	55.0
2"	36.5	47.5	1.65	NPT 2×11.5	73.0
2 1/2"	41.3	60.2	1.65	NPT 2 1/2×8	79.0
3"	46.0	72.9	1.65	NPT 3×8	100.0
4"	50.8	97.4	2.1	NPT 4×8	125.0



JOF-22WB

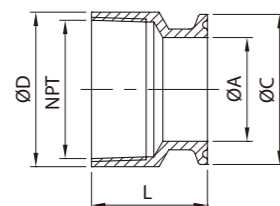
22MP

Size	ØA	ØC	L	NPT
1.0"×1.5"×1/4"	38.1	50.5	19	1/4"
1.0"×1.5"×3/8"	38.1	50.5	19	3/8"
1.0"×1.5"×1/2"	38.1	50.5	19	1/2"
1.0"×1.5"×3/4"	38.1	50.5	19	3/4"
1.0"×1.5"×1.0"	40	50.5	19	1.0"
2.0"×1/4"	50.8	64	19	1/4"
2.0"×3/8"	50.8	64	19	3/8"
2.0"×1/2"	50.8	64	19	1/2"
2.0"×3/4"	50.8	64	19	3/4"
2.0"×1.0"	50.8	64	19	1.0"
2.0"×1.5"	53	64	19	1.5"
2.5"×1.0"	63.5	77.5	35	1.0"
2.5"×1.5"	63.5	77.5	35	1.5"
2.5"×2.0"	65	77.5	35	2.0"
3.0"×1.0"	76.2	91	35	1.0"
3.0"×1.5"	76.2	91	35	1.5"
3.0"×2.0"	76.2	91	35	2.0"
4.0"×1.0"	101.6	119	35	1.0"
4.0"×1.5"	101.6	119	35	1.5"
4.0"×2.0"	101.6	119	35	2.0"
4.0"×2.5"	101.6	119	35	2.5"
4.0"×3.0"	101.6	119	35	3.0"



JOF-22MP02

3A



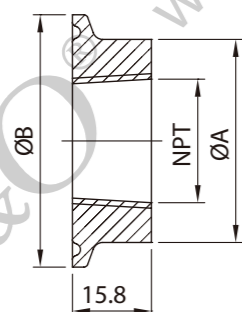
JOF-22MP03

22MP

Size	ØA		ØC	ØD	NPT	L
	1.0"	1.5"				
1/2"×1/4"	9.5		25	30	1/4"	33
1/2"×1/2"	9.5		25	30	1/2"	33
3/4"×1/2"	15.75		25	30	1/2"	38.1
3/4"×3/4"	15.8		25	31	3/4"	33
1.0"×1.5"×1.25"	22.2	34.9	50.5	52	1.25"	39
1.0"×1.5"×1.5"	22.2	34.9	50.5	54	1.5"	39
1.0"×1.5"×2.0"	22.2	34.9	50.5	65	2.0"	40
2.0"×2.0"	47.6		64	65	2.0"	40
2.5"×2.5"	60.3		77.5	80	2.5"	50
3.0"×2.5"	73		91	95	2.5"	50
3.0"×3.0"	73		91	95	3.0"	52
4.0"×4.0"	97.6		119	120	4.0"	54

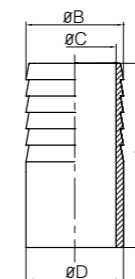
23BMP

Size	ØA	ØB	NPT
1.0"×1/8"	25.4	50.5	1/8"
1.0"×1/4"	25.4	50.5	1/4"
1.0"×3/8"	25.4	50.5	3/8"
1.0"×1/2"	25.4	50.5	1/2"
1.5"×1/8"	38.1	50.5	1/8"
1.5"×1/4"	38.1	50.5	1/4"
1.5"×3/8"	38.1	50.5	3/8"
1.5"×1/2"	38.1	50.5	1/2"
1.5"×3/4"	38.1	50.5	3/4"
1.5"×1.0"	38.1	50.5	1.0"
2.0"×1/2"	50.8	64	1/2"
2.0"×3/4"	50.8	64	3/4"
2.0"×1.0"	50.8	64	1.0"
2.0"×1.5"	50.8	64	1.5"
2.5"×1/2"	63.5	77.5	1/2"
2.5"×3/4"	63.5	77.5	3/4"
2.5"×1.0"	63.5	77.5	1.0"
2.5"×1.5"	63.5	77.5	1.5"
2.5"×2.0"	63.5	77.5	2.0"
3.0"×1/2"	76.2	91	1/2"
3.0"×3/4"	76.2	91	3/4"
3.0"×1.0"	76.2	91	1.0"
3.0"×1.5"	76.2	91	1.5"
3.0"×2.0"	76.2	91	2.0"
4.0"×3/4"	101.6	119	3/4"
4.0"×1.0"	101.6	119	1.0"
4.0"×1.5"	101.6	119	1.5"
4.0"×2.0"	101.6	119	2.0"
4.0"×2.5"	101.6	119	2.5"
4.0"×3.0"	101.6	119	3.0"

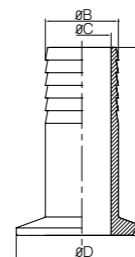


JOF-23BMP

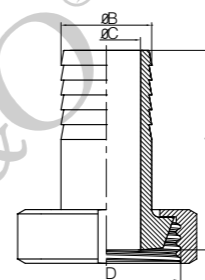
DIN



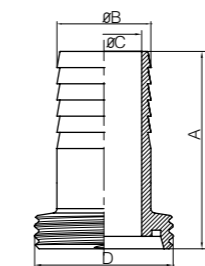
JOF-HNH-01



JOF-HNH-02



JOF-HNH-03N



JOF-HNH-03

Welded Hose Nipple

Size	A	B	C	D
DN15	50	19.5	16	19
DN20	48	23.5	20	23
DN25	58	30.0	26	29
DN32	68	35.5	32	35
DN40	78	43.0	38	41
DN50	88	55.0	50	53
DN65	97	73.0	66	70
DN80	107	89.0	81	85
DN100	116	108.0	100	104

Clamp Hose Nipple

Size	A	B	C	D
DN15	68	19.5	16	34
DN20	66	23.5	20	50.5
DN25	79.5	30.0	26	50.5
DN32	89.5	35.5	32	50.5
DN40	99.5	43.0	38	50.5
DN50	109.5	55.0	50	64
DN65	125	73.0	66	91
DN80	135	89.0	81	106
DN100	144	108.0	100	119

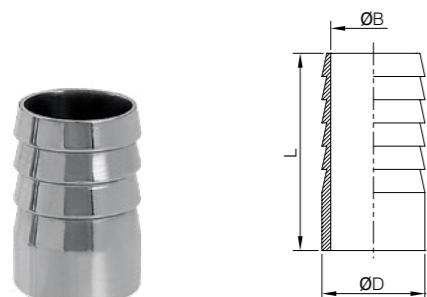
Union-type Hose Coupling

Size	A	B	C	D
DN15	63	19.5	16	RD34×1/8
DN20	63	23.5	20	RD44×1/6
DN25	75	30.0	26	RD52×1/6
DN32	85	35.5	32	RD58×1/6
DN40	95	43.0	38	RD65×1/6
DN50	106	55.0	50	RD78×1/6
DN65	117	73.0	66	RD95×1/6
DN80	127	89.0	81	RD110×1/4
DN100	140	108.0	100	RD130×1/4

Male Hose Nipple

Size	A	B	C	D
DN15	67	19.5	16	RD34×1/8
DN20	69	23.5	20	RD44×1/6
DN25	82	30.0	26	RD52×1/6
DN32	92	35.5	32	RD58×1/6
DN40	102	43.0	38	RD65×1/6
DN50	113	55.0	50	RD78×1/6
DN65	125	73.0	66	RD95×1/6
DN80	135	89.0	81	RD110×1/4
DN100	150	108.0	100	RD130×1/4

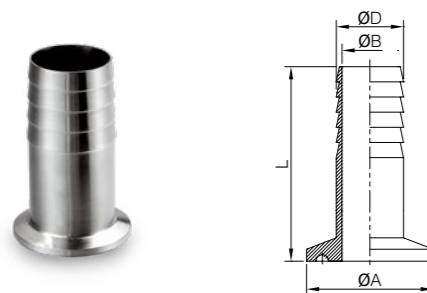
SMS



JOF-SMSHCH

Welded Hose Coupling

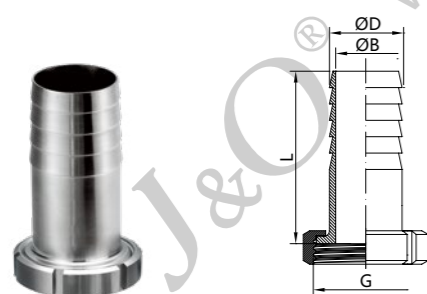
Size	B	D	L
12.7	9.0	12.7	45.0
19	15.0	19.0	45.0
25	21.4	25.4	60.0
32	27.8	31.8	60.0
38	34.0	38.1	60.0
51	47.0	50.8	60.0
63	59.5	63.5	70.0
76	72.2	76.2	80.0
102	97.6	101.6	80.0



JOF-SMSHNH

Clamped Hose Coupling

Size	A	B	D	L
12.7	25.2	9.0	12.7	66.0
19	25.2	15.0	19.0	66.0
25	50.5	21.4	25.4	81.0
32	50.5	27.8	31.8	81.0
38	50.5	34.0	38.1	81.0
51	64.0	47.0	50.8	81.0
63	77.5	59.5	63.5	91.0
76	91.0	72.2	76.2	101.0
102	119.0	97.6	101.6	101.0



JOF-SMSUHR

Union Hose Coupling

Size	B	D	G	L
25	21.4	25.4	RD40×1/6	69.0
32	27.8	31.8	RD48×1/6	70.0
38	34.0	38.1	RD60×1/6	70.0
51	47.0	50.8	RD70×1/6	70.0
63	59.5	63.5	RD85×1/6	81.0
76	72.2	76.2	RD98×1/6	92.0
102	97.6	101.6	RD125×1/4	93.0

3A

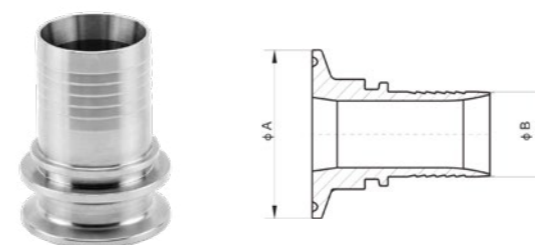


Customized

JOF-CFHA

Sanitary Crimp Ferrule Hose Adapter

Size	Material
1"	SS304
1-1/4"	SS304
1-1/2"	SS304
2"	SS304
2-1/2"	SS304
3"	SS304
3-1/2"	SS304
4"	SS304
5"	SS304
6"	SS304



JOF-SMSHA01

Sanitary Stainless Steel Tri Clamp Crimp Ferrule Hose Adapter

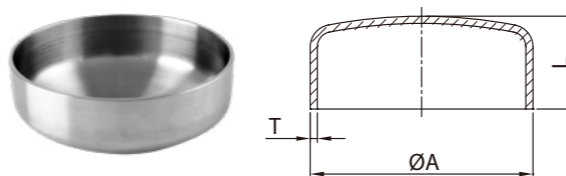
Size	A	B
1/2"	25.2	12.7
3/4"	25.2	19.0
3/4"	34.0	19.0
3/4"	50.5	19.0
1"	50.5	25.4
1-1/4"	50.5	31.75
1.5"	50.5	38.1
2"	64.0	50.8
2-1/2"	77.5	63.5
3"	91.0	76.2
3-1/2"	106.0	89.0
4"	119.0	101.6
5"	155.0	127.0
6"	166.8	152.0
8"	217.7	203.0
10"	268.5	254.0
12"	319.3	395.0



JOF-14VB

14VB STUB END

Size	ØA	ØB	ØC	L	L1
1/2	9.4	12.7	38.1	6.5	28.6
3/4"	15.75	19.05	38.1	6.5	34.9
1"	22.1	25.4	50.8	6.5	41.3
1.5"	34.8	38.1	73	6.5	44.5
2"	47.5	50.8	92.1	6.5	38.1
2.5"	60.2	63.5	104.8	6.5	50.8
3"	72.9	76.2	127	7.4	57.2
4"	97.4	101.6	157.2	7.4	66.7
6"	146.86	152.4	215.9	8.8	76.2
8"	197.66	203.2	269.9	8.8	76.2
10"	247.6	254	323.85	25.4	88.9
12"	298	304	381	25.4	76.2



JOF-CAP

16W CAP

Size	ØA	T	L
1/2"	12.7	1.65	6.4
3/4"	19.05	1.65	7.9
1"	25.4	1.65	19.1
1.5"	38.1	1.65	14.2
2"	50.8	1.65	19.1
2.5"	63.5	1.65	25.4
3"	76.2	1.65	31.8
4"	101.6	2.1	38.1
6"	152.4	2.77	57.2